



# Lowndes Square

London, SW1X

£3,400 per month  
(£784.62 per week)

Garden square apartment of circa 506 sq. ft., located in the heart of Knightsbridge, moments from Hyde Park. Features include wood flooring throughout, built-in storage and a porter.

**CHESTERTONS**



# Lowndes Square

London, SW1X

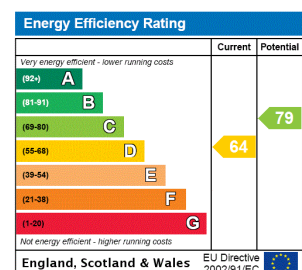
- Porter
- Wood flooring
- Built-in storage
- Stylish open plan kitchen/reception
- Located moments from Hyde Park and Sloane Street



Garden square apartment of circa 506 sq. ft. with porter, located in the heart of Knightsbridge, moments from Hyde Park. The property benefits from wood flooring throughout, spacious open plan kitchen/reception, large double bedroom with built-in storage and a modern bathroom suite.

Lowndes Square is located adjacent to Sloane Street and just a few minutes' walk to Harrods and Knightsbridge station.

**Minimum Term:** 12 months  
**Deposit Required:** £3,923.08  
**Local Authority:** City Of Westminster  
**Council Tax Band:** G  
**EPC Rating:** D  
**Furnished**

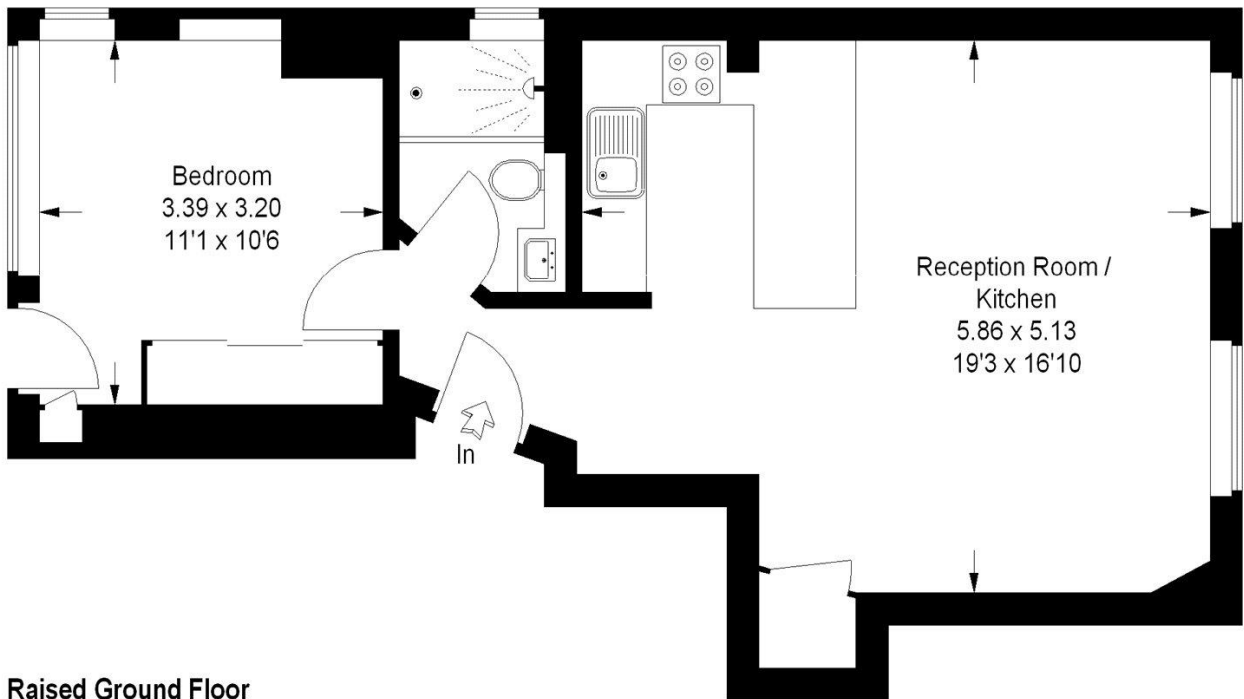


### *Chestertons Knightsbridge & Belgravia Lettings*

31 Lowndes Street  
 London  
 SW1X 9HX  
[knightsbridglettingsusers@chestertons.co.uk](mailto:knightsbridglettingsusers@chestertons.co.uk)  
 02072353530  
[chestertons.co.uk](http://chestertons.co.uk)

Additional tenant charges apply (fees apply to non-AST tenancies only)  
 Tenancy Agreement Fee: £300  
 References per Tenant/Guarantor: £60  
 Inventory check (approx. £100 – £250 inc. VAT)  
[chestertons.co.uk/property-to-rent/applicable-fees](http://chestertons.co.uk/property-to-rent/applicable-fees)

Approximate Gross Internal Area :-  
47 sq m / 506 sq ft



**Raised Ground Floor**

**FLOORPLANZ © 2012 0845 6344080 Ref 95244**

This plan is for layout guidance only. Not drawn to scale unless stated. Windows & door openings are approximate. Whilst every care is taken in the preparation of this plan, please check all dimensions, shapes & compass bearings before making any decisions reliant upon them.

