

18 Astley Street, Leigh

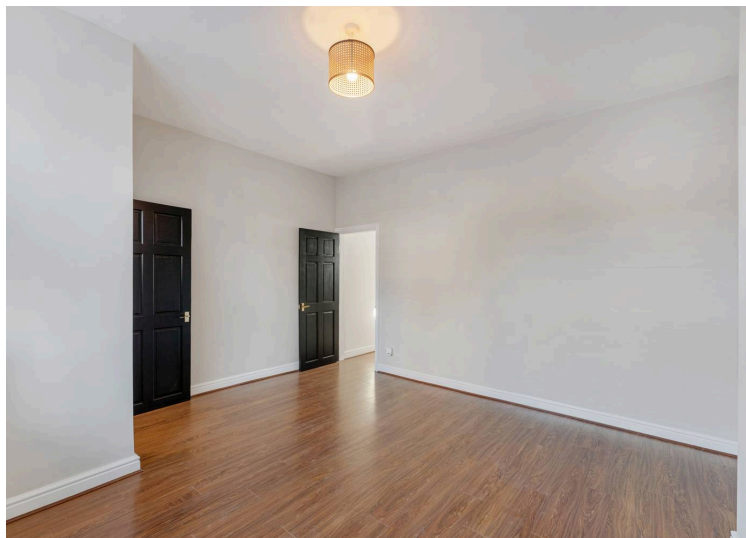
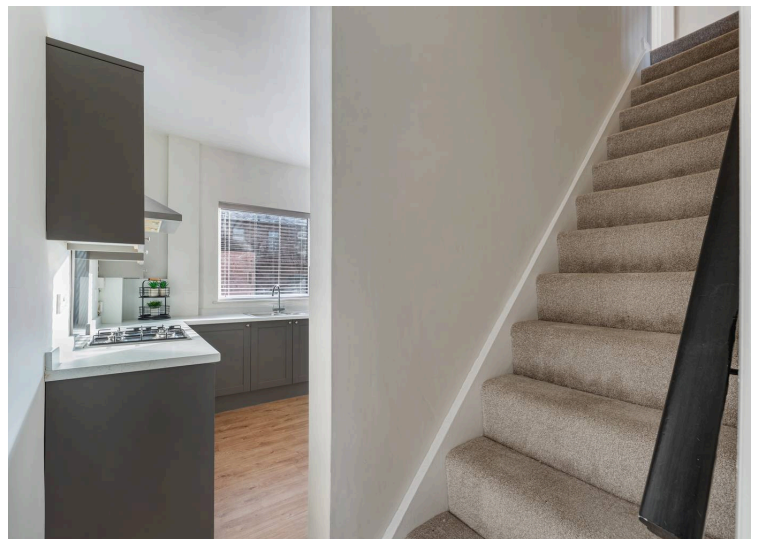
£159,950 Leasehold

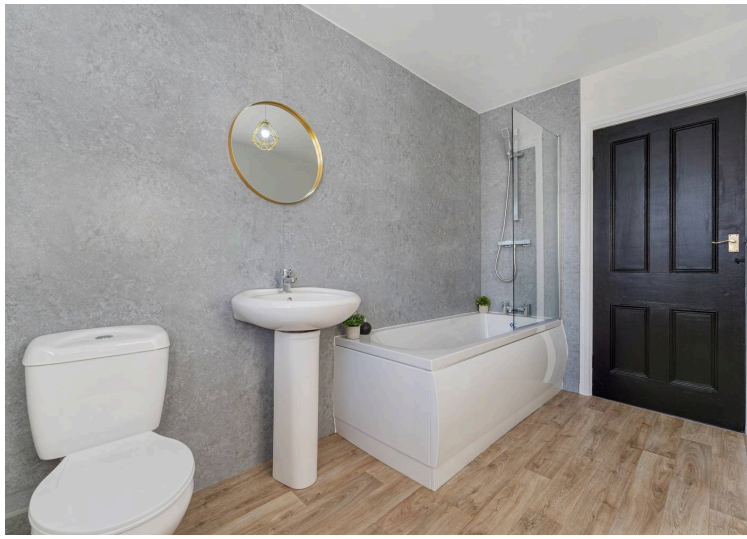
Offered for sale with no onward chain, this beautifully refurbished two-bedroom garden-fronted mid-terraced property is located on the ever-popular Astley Street, Leigh.



Scan For
More Information
About This Property.

Ashtons 







Approx. Gross Internal Area 898 sq. ft / 83.42 sq. meters

Whilst every attempt has been made to ensure the accuracy of the floorplan shown, all measurements, positioning
Fixtures fittings and any other data shown are an approximate interpretation for illustrative purposes only and are
not to scale. No responsibility is taken for any errors, omission, miss-statement or use of data show.

www.ashtons.net

You can include any text here. The text can be modified upon generating your brochure.



Ashtons

Fixtures and fittings: A list of the fitted carpets, curtains, light fittings and other items fixed to the property which are included in the sale (or may be available by separate negotiation) will be provided by the Seller's Solicitors. Important Notice: 1. Particulars: These particulars are not an offer or contract, nor part of one. You should not rely on statements by Ashtons in the particulars or by word of mouth or in writing ("information") as being factually accurate about the property, its condition or its value. Neither Ashtons nor any joint agent has any authority to make any representations about the property, and accordingly any information given is entirely without responsibility on the part of the agents, seller(s) or lessor(s). 2. Photos, Videos etc: The photographs, property videos and virtual viewings etc. show only certain parts of the property as they appeared at the time they were taken. Areas, measurements and distances given are approximate only. 3. Regulations etc: Any reference to alterations to, or use of, any part of the property does not mean that any necessary planning, building regulations or other consent has been obtained. A buyer or lessee must find out by inspection or in other ways that these matters have been properly dealt with and that all information is correct. 4. To find out how we process Personal Data, please refer to our Group Privacy Statement and other notices at <https://www.ashtons.net/privacy-policy/>