



Cambridge Gardens, W10

£750,000

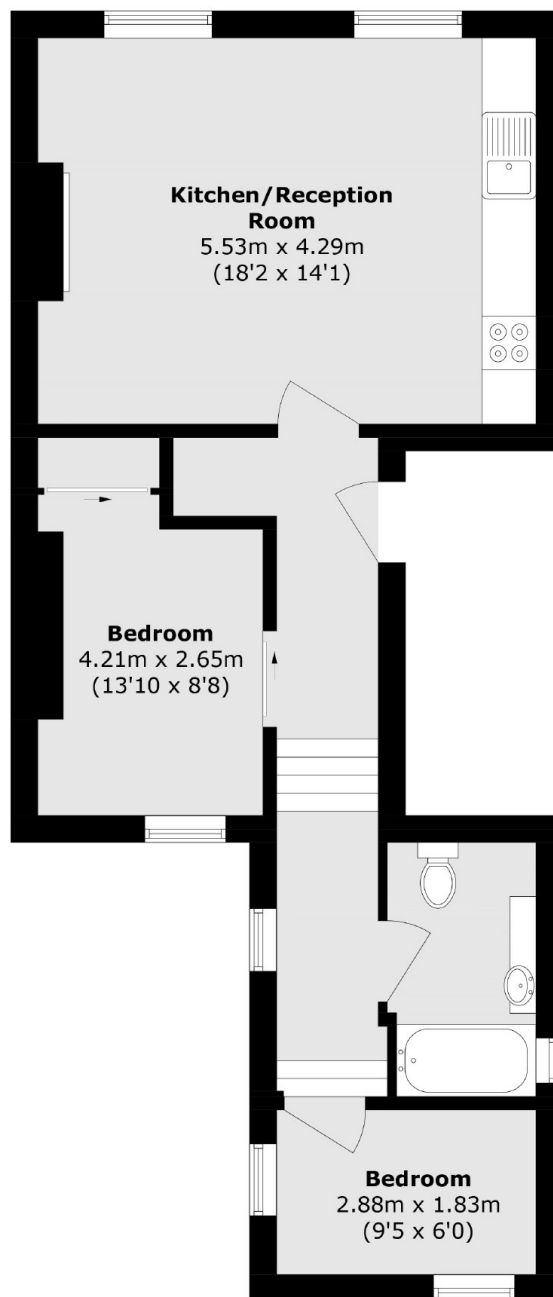
A contemporary two bedroom first floor apartment set within a semi-detached Victorian Conversation. The property is entered on the first floor and has a South facing open plan kitchen/reception room with high ceilings, two bedrooms to the rear and a family sized bathroom. There is also access to a shared garden to the rear of the property.

The property occupies a prominent location in Cambridge Gardens and is within a short walk of Portobello market and Golborne Road with its fashionable shops and cafes. Ladbroke Grove tube station (Circle and Hammersmith & City lines) is also close by.

Features

- First Floor Flat
- South Facing Reception
- Share Of Freehold
- Communal Garden
- Two Bedrooms
- Ladbroke Grove Station

Cambridge Gardens, London, W10



First Floor

Total area (approx.): 54.3 sq. m (584.4 sq. ft)