



Forestdale, N14

£5,750 Per calendar month

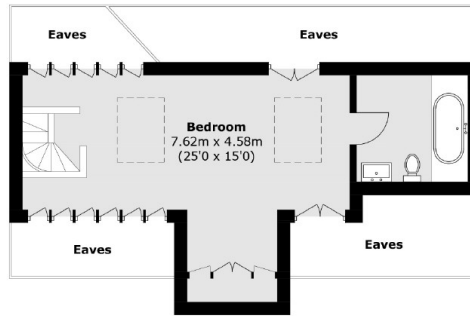
A refurbished five bedroom detached family home with a wide corner plot and carriage driveway that allows parking for up to four vehicles as well as a garage with an up and over door incorporating a gymnasium to the rear.

Forestdale is situated within close proximity of local schooling, amenities and the nearest stations include Arnos Grove, Palmers Green and Southgate, all within 0.8 miles.

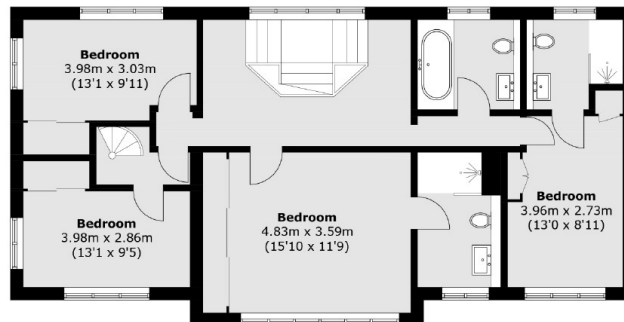
Features

- New Central Heating
- Smart Controlled
- LED Lighting
- Pyronix Alarm Systems
- Centralised
- Sound System Electric
- Underfloor Heating External
- CCTV

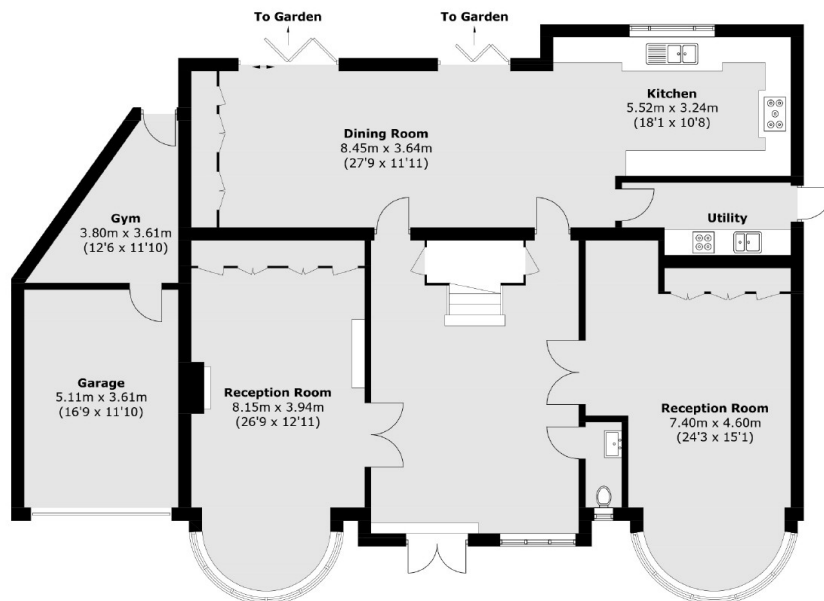
Forestdale, London, N14



Second Floor



First Floor



Ground Floor

Total area (approx.): 288.4 sq. m (3,104.3 sq. ft)
(Excluding Eaves)

Garage / Gym (approx.): 27.6 sq. m (297.1 sq. ft)