



4 Queens Park House Queens Park View, Chester
£150,000



4 Queens Park House Queens Park View

Chester

OVER 55s ONLY Situated in a highly desirable location just a short stroll across the historic Old Dee Bridge and into Chester city centre, this beautifully renovated ground-floor apartment offers stylish, low-maintenance living within a welcoming and well-established retirement community.

Council Tax band: B

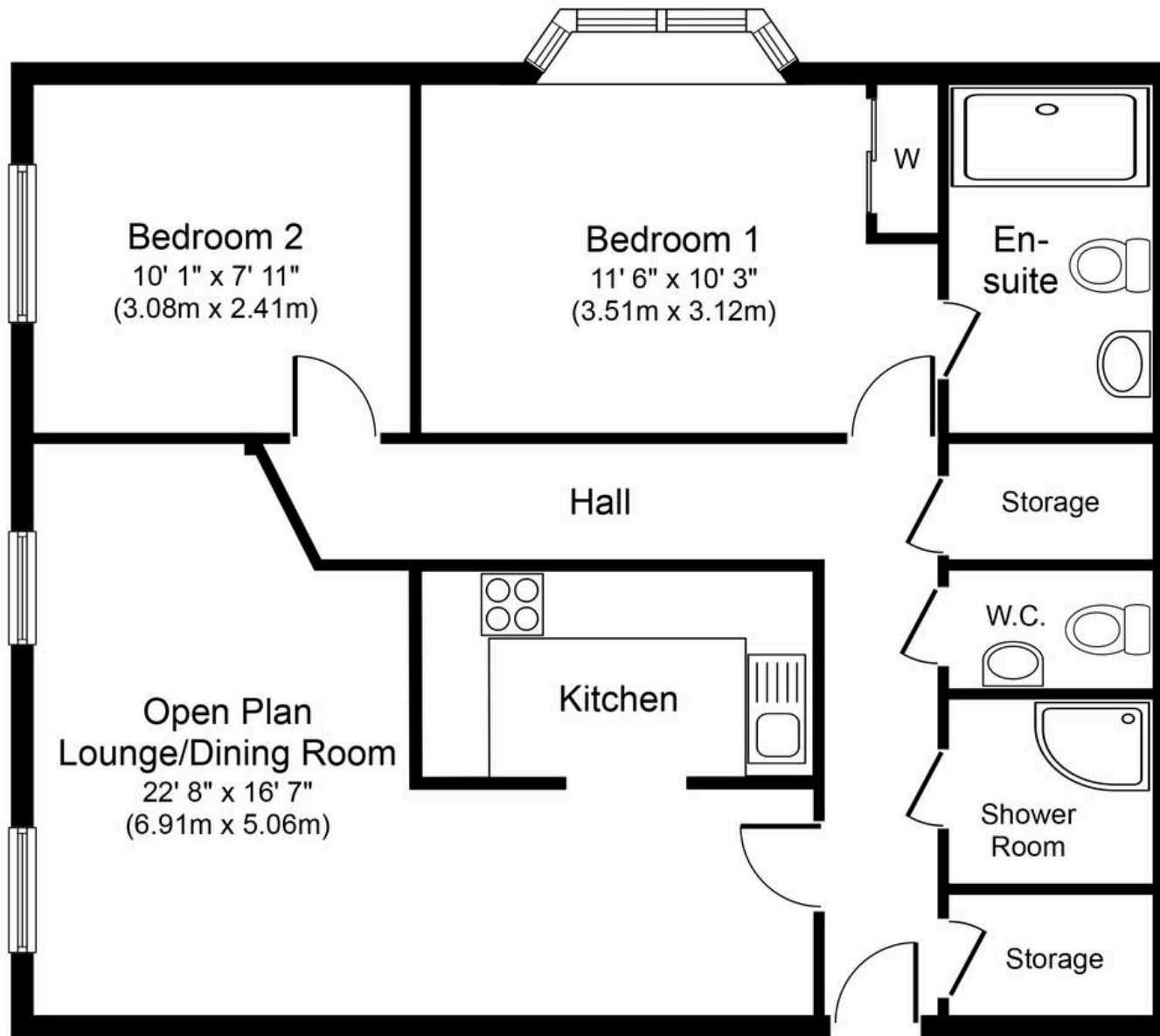
EPC Energy Efficiency Rating: C

EPC Environmental Impact Rating: D

- Over 55s Retirement Development.
- Beautifully Presented Ground Floor Apartment.
- Spacious and Light-Filled Accommodation Ready for Immediate Occupation.
- Two Generous Double Bedrooms, Including a Principal Bedroom with Attractive Bay Window.
- Peaceful Yet Convenient Location Just a Short Walk from Chester City Centre.
- Offered to the Market with No Onward Chain.







Approximate Floor Area
889 sq. ft.
(82.6 sq. m.)

Whilst every attempt has been made to ensure the accuracy of the floor plan contained here, measurements of doors, windows, rooms and any other items are approximate and no responsibility is taken for any error, omission, or mis-statement. The measurements should not be relied upon for valuation, transaction and/or funding purposes. This plan is for illustrative purposes only and should be used as such by any prospective purchaser or tenant. The services, systems and appliances shown have not been tested and no guarantee as to their operability or efficiency can be given.



Please note -
This building is for those 55 and over.

CURRANS
homes

Currans Homes Sales

Currans Homes, 11 Grosvenor Street - CHI 2DD

01244 313900 • sales@curranshomes.co.uk • curranshomes.co.uk/