



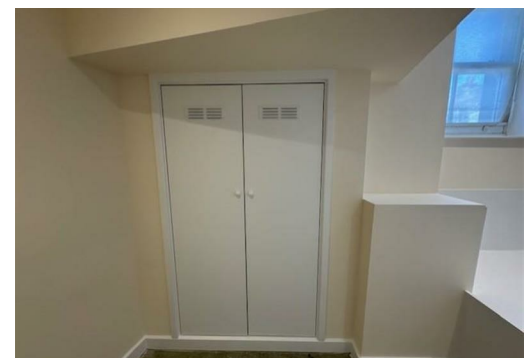
Derby House Margate Road, Ramsgate, CT11 7SG

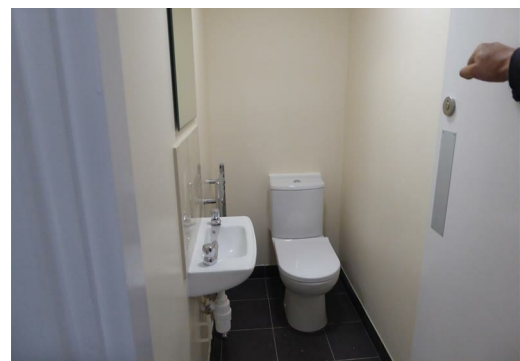
£800 Per calendar month

ROOM FOR TWO. This is a large ground floor room and like all rooms offers its own kitchen with fridge freezer, hob and oven plus wall, floor units and worktops. There is a double bed built in and a wardrobe. Each room has day blinds and black out blinds so privacy is important. The property is in easy walking distance of Ramsgate Main Line Railway Station and on the Loop bus route. There is a TV point in each room and a charging point for your phone by each bed. Shower rooms with basins and toilets plus separate toilets are located on each floor. The Wifi is included and provided by a Commercial Hub on each floor for the very best signal. Excellent Double glazing, video entry phones. A Laundry Room with 4 washing machines and 4 tumble dryers are available for your use. Gas Central Heating is fitted for your added comfort.

Outside there is a smoking area, bin store, recreation area and bike storage. Security is uppermost and all tenants will be working and CCTV is in use. The communal areas are cleaned weekly. In the first instant please call us to view.

Frank Muir was born here. Derby House is a well presented and well kept conversion offering first class shared accommodation. Absolutely stunning and superbly appointed 15 letting rooms over three floors. Every convenience is catered for. The rooms are all single but room 5 is the largest of all. The rent is all you pay and is inclusive of every bill for everything provided i.e. Gas Central Heating, Council Tax, Electricity, Water, Wi-Fi, and a weekly cleaner to all common parts.





Energy Efficiency Rating		Current	Potential
100-109	A		
81-100	B		
62-80	C		
43-61	D		
25-42	E		
10-24	F		
1-9	G		

Very energy efficient - lower running costs
Not energy efficient - higher running costs

England & Wales EU Directive 2002/91/EC

Environmental Impact (CO ₂) Rating		Current	Potential
100-109	A		
81-100	B		
62-80	C		
43-61	D		
25-42	E		
10-24	F		
1-9	G		

Very environmentally friendly - lower CO₂ emissions
Not environmentally friendly - higher CO₂ emissions

England & Wales EU Directive 2002/91/EC