

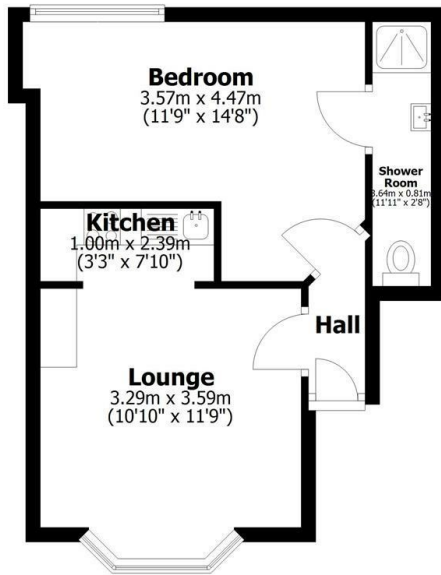


Flat 1, 1-3 Carline Road, Lincoln, LN1 1HL

Asking Price £129,950

- One Bedroom Ground Floor Apartment
- Secluded Outdoor Seating Area
- Close to Shops, Amenities and Restaurants in Uphill Lincoln
- Council Tax Band A
- Open Plan Kitchen/Living Area
- Well Presented Throughout
- No Onward Chain
- Large Bedroom with Ensuite Shower Room
- Exposed Solid Wood Flooring and Newly Fitted Carpets
- EPC Rating C

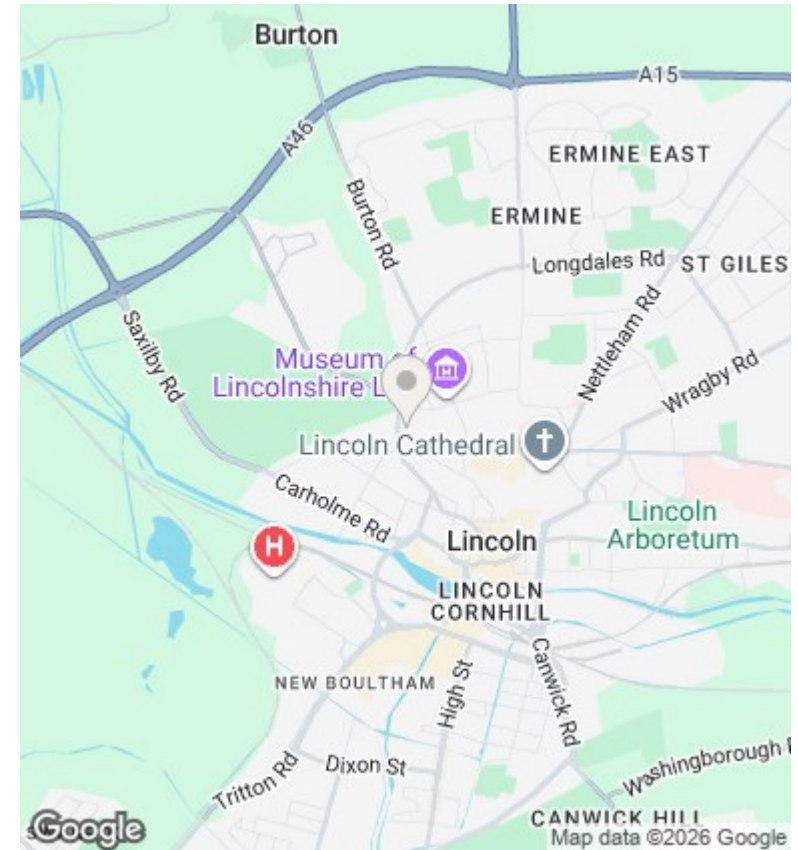
Ground Floor
Approx. 33.2 sq. metres (357.9 sq. feet)



Total area: approx. 33.2 sq. metres (357.9 sq. feet)

This plan is for layout guidance only. Not drawn to scale unless stated. Windows and door openings are approximate. Whilst every care is taken in the preparation of this plan, please check all dimensions, shapes and any compass bearings before making any decisions reliant upon them. All interested parties must verify their accuracy independently.

Drewery Jones Independent Estate Agents
Plan produced using PlanUp.



Directions

Viewings

Viewings by arrangement only. Call 01522 396059 to make an appointment.

Council Tax Band

C

EPC Rating:

C

Energy Efficiency Rating		Current	Potential
<i>Very energy efficient - lower running costs</i>			
(92 plus) A			
(81-91) B			
(69-80) C		69	77
(55-68) D			
(39-54) E			
(21-38) F			
(1-20) G			
<i>Not energy efficient - higher running costs</i>			
England & Wales		EU Directive 2002/91/EC	