



Kings Bench Street, SE1

£3,500 Per calendar month

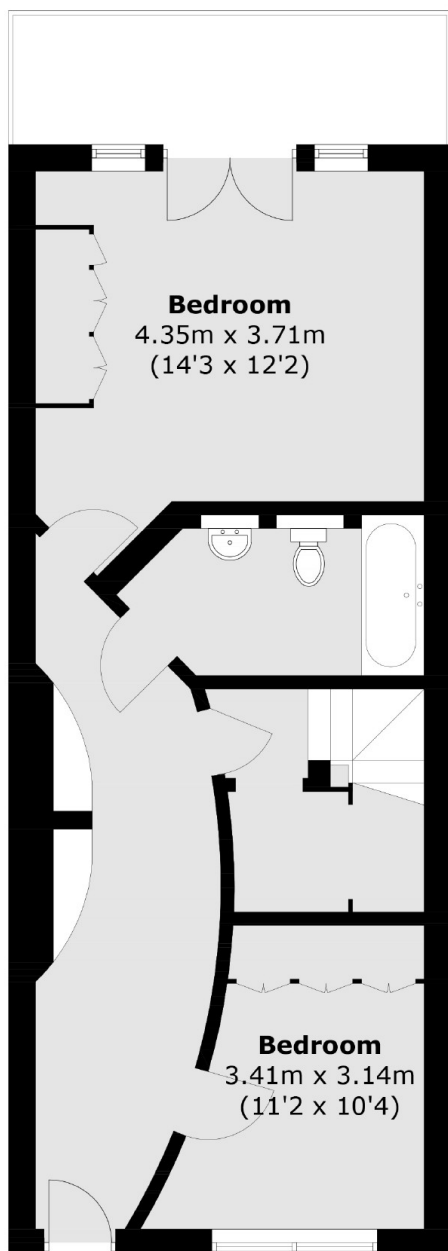
A highly attractive duplex apartment with a spacious open plan living room, which occupies the whole of the upper floor and leads out onto a large, private south west-facing terrace, two generous double bedrooms, a large family bathroom and an additional balcony. Available to rent unfurnished.

Kings Bench Street is an attractive side street in the heart of SE1, set back from Blackfriars Road, with easy access to Southwark, Blackfriars & London Bridge stations, along with the South Bank, the Cut, Borough Market and numerous other attractions.

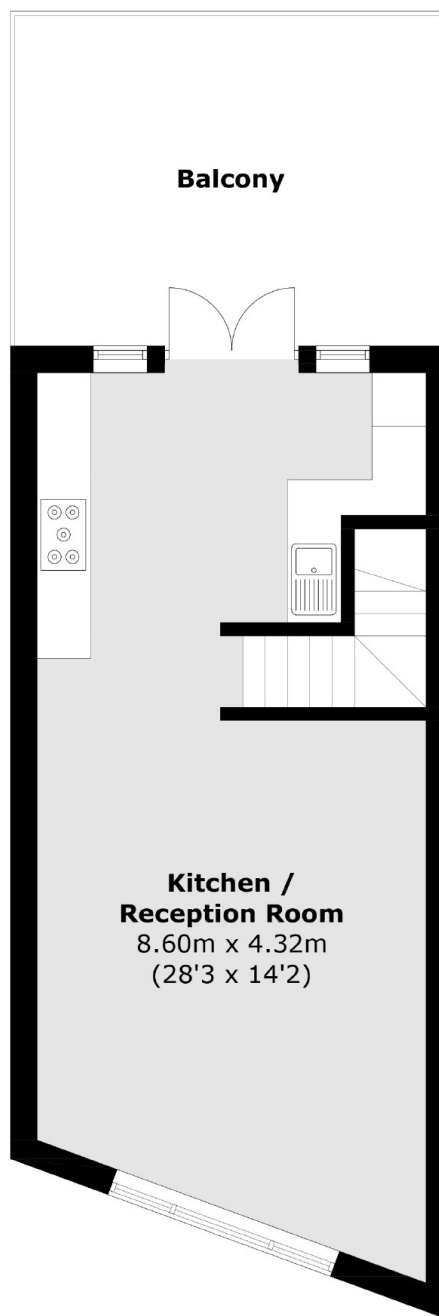
Features

Available unfurnished
Duplex Apartment
South West-Facing
Large Terrace
Second Balcony
Over 1,000 Sq Ft

Kings Bench Street, London, SE1



Third Floor



Fourth Floor

Total area (approx.): 93.0 sq. m (1,001.0 sq. ft)
Balcony area (approx.): 25.0 sq. m (269.1 sq. ft)