



1a Aughton Park Drive, Aughton

Ormskirk

Offers Over £400,000

1a Aughton Park Drive

Aughton, Ormskirk

Stylish three-bed detached home in sought-after Aughton. Modern kitchen, en-suite, low-maintenance garden, parking, near train, schools, shops, countryside. Ultrafast broadband. Energy rating 82B.

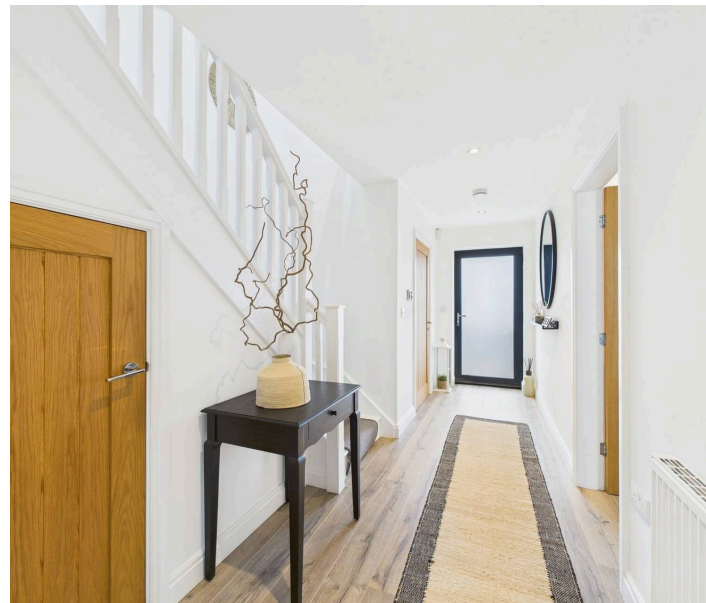
Council Tax band: E

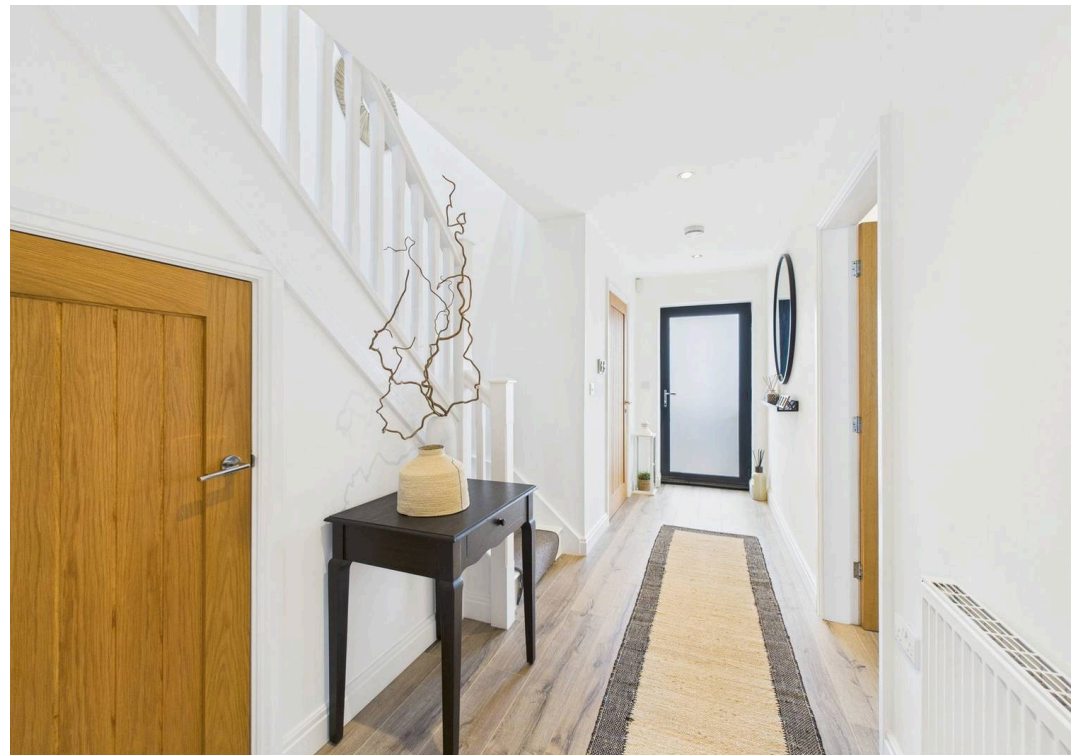
Tenure: Freehold

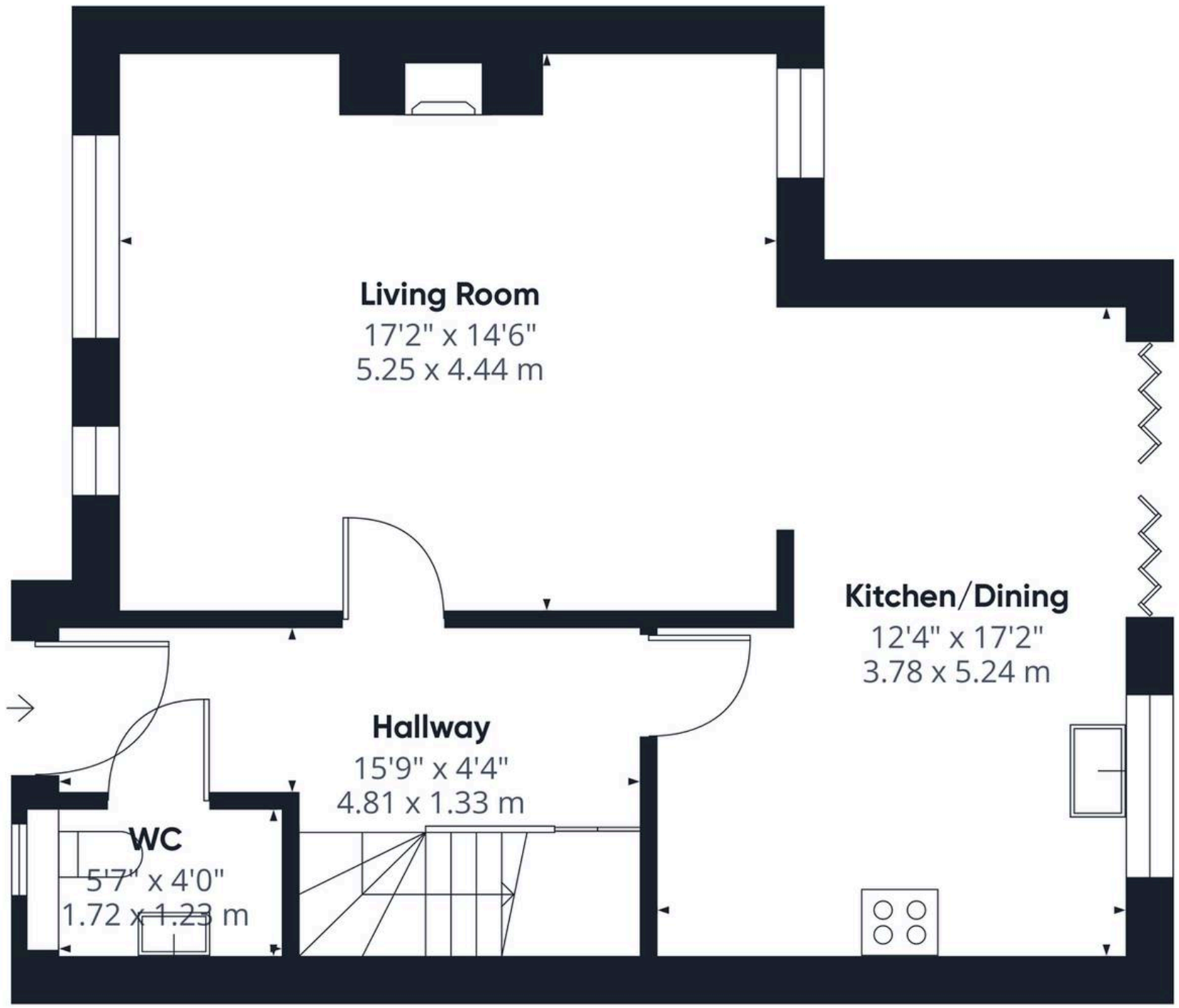
EPC Energy Efficiency Rating: B

EPC Environmental Impact Rating: B

- Sought-after Aughton location
- Modern high-gloss kitchen
- Garden
- Stylish detached family home
- Secure gated driveway parking
- Walking distance to train station
- Spacious open-plan living
- Low-maintenance rear garden
- Luxurious master en-suite







Approximate total area⁽¹⁾

571 ft²

53 m²

(1) Excluding balconies and terraces

Calculations reference the RICS IPMS 3C standard. Measurements are approximate and not to scale. This floor plan is intended for illustration only.

GIRAFFE360

Ground Floor



IAN ANTHONY

5 Burscough Street, Ormskirk - L39 2EG

01695580888

enquiries@iananthonyestates.co.uk

iananthonyestates.co.uk/

