



Connells

The Stables Bowleaze Coveyay
Weymouth

The Stables Bowleaze Coveway Weymouth DT3 6PP

for sale offers in excess of
£325,000



Property Description

Introducing 'No 2. The Stables', a 'Prestige Casa Di Lusso 2023' Model '45 x 20'. An exclusive collection of 31 luxury lodges, surrounded by unrivalled landscaping and offering our most spacious pitches yet. With everything you require to recharge and reconnect within walking distance. Here memories are made to last a lifetime. Your private retreat awaits you.

There is something for every family to live a life less ordinary away from home.

Entrance

Composite glazed door leading into: -

Open Plan Living

21' 7" x 19' (6.58m x 5.79m)

Kitchen/Living/ Dining Room

Outstanding triple aspect room comprising of; lounge area with double glazed doors overlooking the veranda walk with waterside views. Three side aspect double glazed windows. Kitchen area comprising of luxury eye and base level units, with worksurfaces and integral appliances including microwave, fridge freezer, 4 ring gas oven with cooker hood over and grill and dishwasher. Feature breakfast island. Coving. Skirt boarding. Herringbone flooring. Wall mounted radiators. Inset spot lighting.

Nestled on the beach at Bowleaze Cove, and surrounded by Dorset's Jurassic coastline, you can be sure to enjoy your very own piece of paradise. From sunrise strolls along the beach, luxurious lunches by the water's edge, breath-taking coastal walks, an afternoon relaxing on our sun terrace or some time out at our luxurious spa, you'll be sure to find your perfect escape.

This secluded development is home to 7 different specifications of lodges, each more luxurious than the last.

This development offers lodges with sumptuous open plan living as standard but creates new inviting spaces with dramatic split level roofs, corner fireplaces, king sized bedrooms, classic and opulent décor, full wrapped decking, and vaulted ceiling throughout.

Inner Hall

Inset spot lighting. Herringbone flooring. Door leading into: -



Bedroom One

11' 11" x 9' 2" (3.63m x 2.79m)

Side aspect double glazed window which enjoys open countryside views. Herringbone flooring. Wall mounted radiator. Power points. Television point. Wall lighting. Door leading into: -

En Suite

7' 4" x 4' 8" (2.24m x 1.42m)

Stunning suite comprising of a fully enclosed luxurious shower unit with overhead rain/waterfall. wash hand basin with mixer taps, low level WC, radiator, rear aspect double glazed frosted window. Herringbone flooring.

Bedroom Two

10' 7" x 9' 4" (3.23m x 2.84m)

Two rear aspect double glazed windows which enjoy open countryside views. Side aspect double glazed window. Wall mounted radiator. Power points. Wall lighting. Double fitted wardrobes. Herringbone flooring.

Bedroom Three

9' 3" x 8' 9" (2.82m x 2.67m)

Side aspect double glazed windows which enjoy open countryside views. Wall mounted radiator. Power points. Wall lighting. Herringbone flooring.

Bathroom

7' 1" x 5' 7" (2.16m x 1.70m)

Stunning fully tiled suite comprising of a fully enclosed luxurious bath with shower unit with overhead rain/waterfall. Wash hand basin with mixer taps low level WC, radiator, side aspect double glazed frosted window, vanity mirror. Herringbone flooring.

Outside

Veranda

Impressive decked private veranda, wrapping around the lodge enjoying a Southerly aspect with waterside views. Private Hot tub.

Allocated Parking

Parking for two vehicles with EV charging point.

Service Charges & Lease

The vendor informs us; Annual rates £1017.50. Property holds a 20 Year Lease from 14th August 2023.

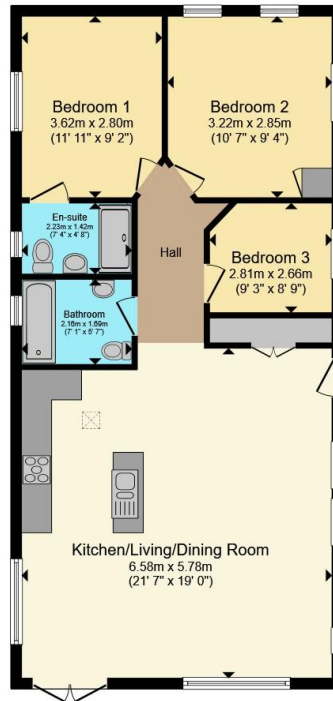
Agents Notes

The park itself is open from March 15th to January 15th for holiday usage, no pressure to upgrade or remove the lodge off site as long as the holiday home is looked after & kept presentable. The vendor informs us the generous income it receives when not in use be included it made 42,000 in 2025.









Floor Plan

Total floor area 81.5 m² (877 sq.ft.) approx

This floor plan is for illustrative purposes only. It is not drawn to scale. Any measurements, floor areas (including any total floor area), openings and orientation are approximate. No details are guaranteed, they cannot be relied upon for any purpose and they do not form part of any agreement. No liability is taken for any error, omission or misstatement. A party must rely upon its own inspection(s). Powered by www.propertybox.io

Connells

To view this property please contact Connells on

T 01305 770 333
E weymouth@connells.co.uk

84 St. Thomas Street
 WEYMOUTH DT4 8EN

EPC Rating:
 Exempt

view this property online connells.co.uk/Property/WEY309612

We are currently awaiting Tenure details. For further information please contact the branch. Please note additional fees could be incurred for items such as leasehold packs.

Tenure:



1. MONEY LAUNDERING REGULATIONS Intending purchasers will be asked to produce identification documentation at a later stage and we would ask for your co-operation in order that there will be no delay in agreeing the sale. 2. These particulars do not constitute part or all of an offer or contract. 3. The measurements indicated are supplied for guidance only and as such must be considered incorrect. Potential buyers are advised to recheck measurements before committing to any expense. 4. We have not tested any apparatus, equipment, fixtures, fittings or services and it is in the buyers interest to check the working condition of any appliances.

Connells Residential is registered in England and Wales under company number 1489613, Registered Office is Cumbria House, 16-20 Hockliffe Street, Leighton Buzzard, Bedfordshire, LU7 1GN. VAT Registration Number is 500 2481 05.

See all our properties at www.connells.co.uk | www.rightmove.co.uk | www.zoopla.co.uk

Property Ref: WEY309612 - 0006