

EDEN MIDCALF  
— SALES & LETTINGS —

£295,000  
Crystal Gardens  
Stourbridge, DY7 6DG

## PROPERTY SUMMARY

An attractively appointed modern two bedroom end mews house enjoying a delightful cul-de-sac setting within the highly sought after village of Kinver. Located within walking distance of Kinver's thriving high street and its excellent amenities, the property offers a well proportioned layout including a dining kitchen, two double bedrooms, off-road parking, a garage and a pleasantly laid out rear garden. Available with No Upward Chain. EPC=D

2

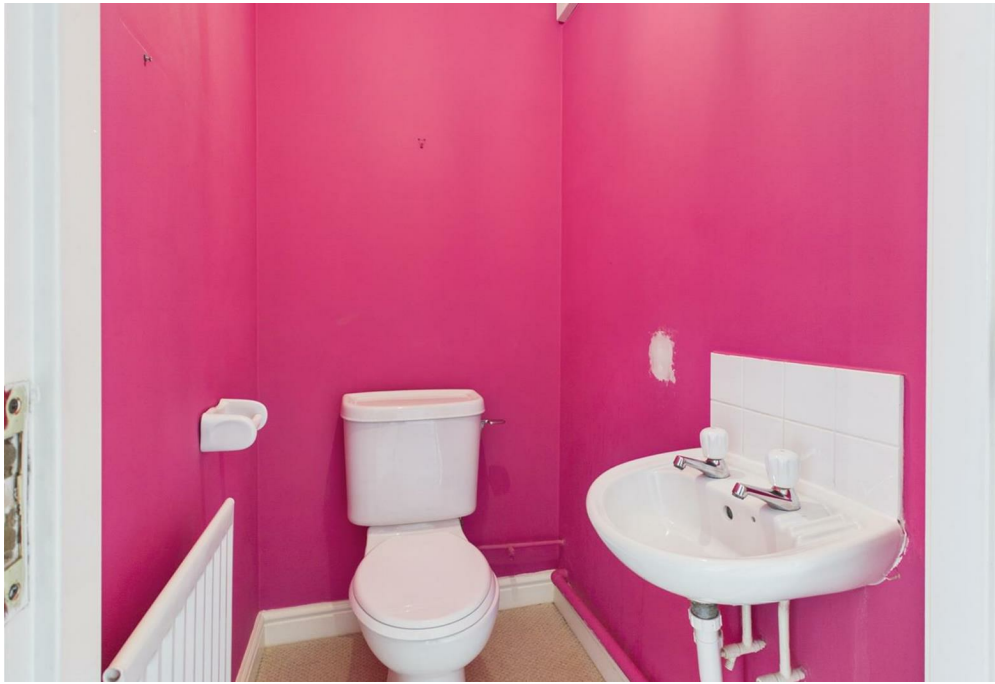


2



1







Approximate total area<sup>1)</sup>  
 771.02 ft<sup>2</sup>  
 71.63 m<sup>2</sup>

(1) Excluding balconies and terraces.

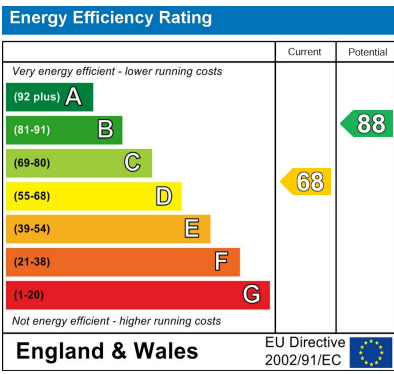
While every attempt has been made to ensure accuracy, all measurements are approximate, not to scale. This floor plan is for illustrative purposes only.  
 Calculations are based on RICS IPMS 3C standard.  
 GIRAFFE360

**LOCAL AUTHORITY**

**TENURE**  
 Freehold

**COUNCIL TAX BAND**  
 B

**VIEWINGS**  
 By prior appointment only



Agents Note: Whilst every care has been taken to prepare these particulars, they are for guidance purposes only. All measurements are approximate and are for general guidance purposes only and whilst every care has been taken to ensure their accuracy, they should not be relied upon and potential buyers/tenants are advised to recheck the measurements.

**EDEN MIDCALF**  
 SALES & LETTINGS

28 High Street  
 Kinver  
 DY7 6HF

01384 878000  
<https://www.edenmidcalf.co.uk/>  
 us/