



Dolben Street, SE1

£950,000

A rare opportunity to acquire a four-storey Victorian freehold house in the heart of SE1, with planning granted for further loft extension and the addition of a roof terrace. The property features three well-proportioned double bedrooms, a spacious reception room, a fully fitted modern kitchen, a contemporary three-piece bathroom, and an additional WC. Offers in excess of £950,000.

Dolben Street is enviably positioned just off Great Suffolk Street, moments from the South Bank & c300 yards from the Tate Modern, whilst within easy reach of Southwark, London Bridge, Blackfriars and Waterloo stations. The area offers an array of attractions right on

Features

- Offers in excess of £950,000
- Victorian Freehold House
- Planning Permission Granted
- Four Storeys
- Separate Kitchen & Reception
- Very Centrally Located
- Chain Free Sale



Dolben Street, SE1

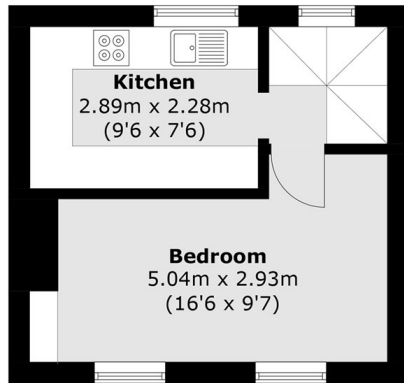
Occupying a prime position in SE1, this attractive Victorian freehold house is arranged over four levels and offers an excellent balance of character, contemporary comforts and practicality.

The accommodation includes three generously sized double bedrooms and a welcoming reception room, providing ample space for both everyday living and entertaining. A stylish fitted kitchen sits at the heart of the home, complemented by a modern bathroom suite and a separate WC.

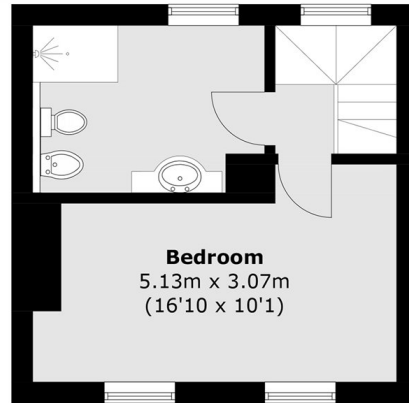
Further enhancing its appeal, the property benefits from planning consent for a loft extension and the addition of a roof terrace, presenting an exciting opportunity to increase both living space and long-term value in this central London setting.



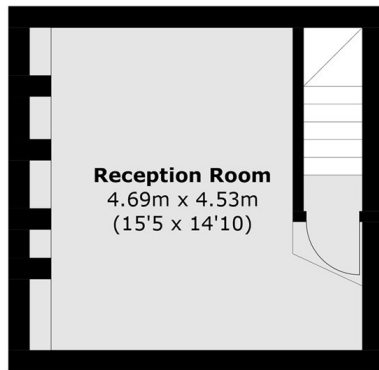
Dolben Street,
London, SE1



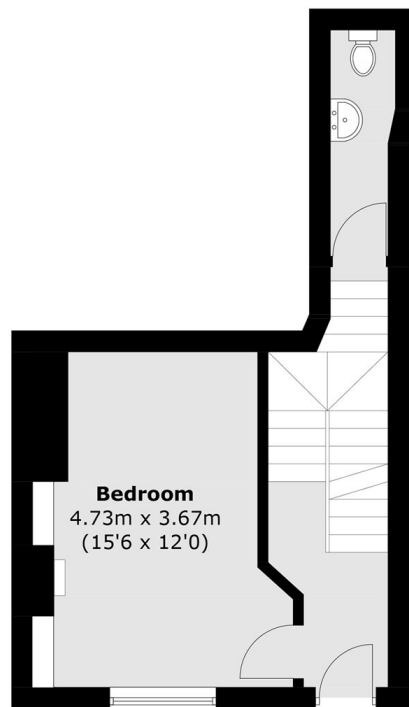
First Floor



Second Floor



Basement Floor



Ground Floor

Total area (approx.): 98.6 sq. m (1,061.4 sq. ft)
(Including Basement)