



Hornton Place  
London, W8

CHESTERTONS







Tucked away in a charming and quiet setting, Hornton Place is a beautifully presented mews house arranged over three floors, offering stylish and versatile living space throughout.

The ground floor features a spacious studio room complete with a kitchenette and a separate bathroom, making it ideal for guests, a home office, or additional living accommodation. On the first floor, you'll find a bright and inviting reception area with a semi open-plan kitchen, creating a perfect space for both relaxing and entertaining. The top floor is dedicated to a generous principal bedroom, complemented by a modern bathroom.

Finished with contemporary fittings throughout, the property is offered furnished and combines modern comfort with the character and privacy of mews living.

Ideally located in the heart of W8, Hornton Place enjoys close proximity to the excellent amenities of Kensington High Street, with its wide selection of shops, cafés and restaurants. The beautiful open spaces of Holland Park and Kensington Gardens are also nearby, offering peaceful green surroundings, while excellent transport links provide easy access to the West End and the City.

- Two-bedroom
- Two-bathroom
- Mews house offering versatile living space throughout.
- Modern
- Two floors of living space

**£4,996.33 pcm**

Additional tenant charges apply (fees apply to non-AST tenancies only)

Tenancy Agreement Fee: £300

References per Tenant/Guarantor: £60

Inventory check (approx. £100 – £250 inc. VAT)

[chestertons.co.uk/property-to-rent/applicable-fees](https://www.chestertons.co.uk/property-to-rent/applicable-fees)

**Minimum Term:** 12months  
**Deposit Required:** £6,918.00  
**Local Authority:** Royal Borough of Kensington & Chelsea  
**Council Tax Band:** To be confirmed  
**EPC Rating:** To be confirmed  
**Furnished, Part Furnished, Unfurnished**

***Chestertons Kensington Lettings***

116 Kensington High Street  
 Kensington  
 London  
 W8 7RW

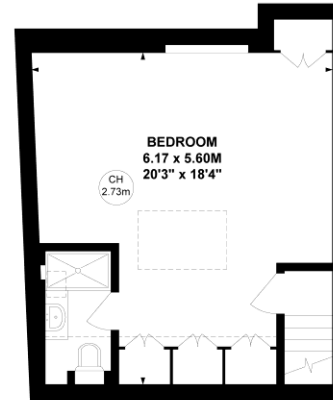
[kensingtonlettingsusers@chestertons.co.uk](mailto:kensingtonlettingsusers@chestertons.co.uk)  
 02079377260

# Hornton Place, W8

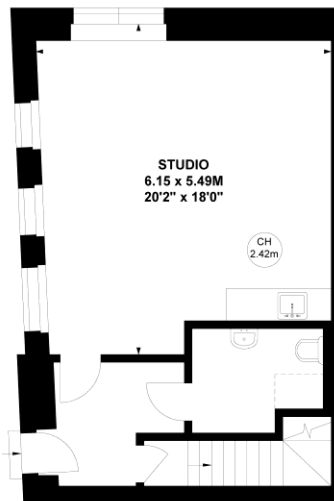
Approximate gross internal area

125.75 sq m / 1353 sq ft

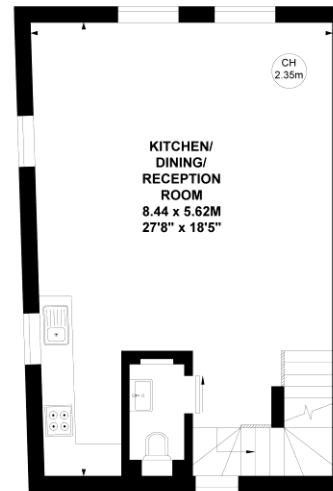
Key :  
CH - Ceiling Height



**Second Floor**



**Ground Floor**



**First Floor**

This plan is not to scale and must be used as layout guidance only. All measurements and areas are approximate and should not be relied upon to provide accurate information. This plan must not be relied upon when making property valuations, design considerations or any other such relevant decisions. We accept no responsibility or liability (whether in contract, tort or otherwise) in relation to any loss whatsoever arising from or in connection with any use of this plan or the adequacy, accuracy or completeness of it or any information within it.

Chesterton UK Services Limited trading as Chestertons for themselves and for the vendor of this property whose agents they are, give notice that (i) these particulars do not constitute any part of an offer or contract, (ii) all statements contained within these particulars are made without responsibility on the part of Chestertons or the vendor, (iii) whilst made in good faith, none of the statements contained within these particulars are to be relied upon as a statement or representation of fact, (iv) any intending purchasers must satisfy themselves by inspection or otherwise as to the correctness of each of the statements contained within these particulars, (v) the vendor does not make or give either Chestertons or any person in their employment any authority to make or give representation or warranty whatsoever in relation to this property. Wide angle lenses may be used. ©Copyright Chestertons | Chesterton Global Ltd | Registered Office 40 Connaught Street, Hyde Park, London W2 2AB Registered Company Number 05334580.



This paper is  
100% recyclable