



Hillmarton Road, N7

£692 Per week

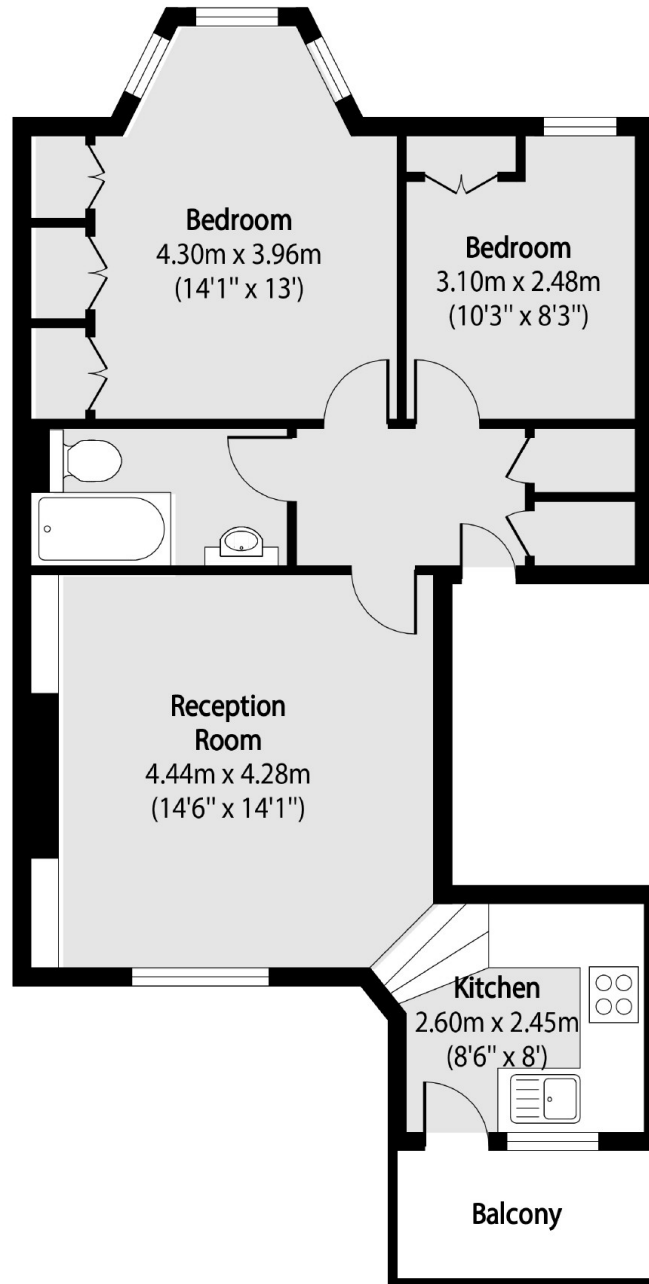
A stunning two bedroom property with a secluded balcony close to the Piccadilly Line.

The Hillmarton Conservation area is a popular neighbourhood with excellent transport links to the city via the Piccadilly Line and Drayton Park Overground. The vast amenities of Holloway Road, Camden and Islington are also all close at hand.

Features

- Two bedrooms
- Modern
- First Floor
- Great Storage
- Balcony
- Part Furnished

Hillmarton Road,
London, N7



Total area (approx): 59.05 sq m (635 sq. ft)

Balcony total area (approx): 3.92 sq m (42 sq. ft)