



# 1 Plumer Road

High Wycombe

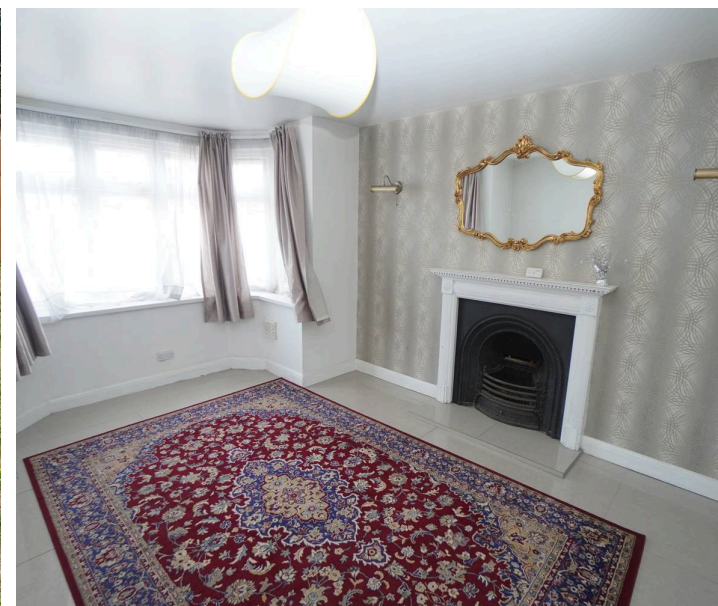
- A Bay Fronted Detached Family Home
- Cloakroom, Living Room, Separate Dining Room, Kitchen/Breakfast Room
- Easy Reach Of Town Centre Amenities And Train Station
- Three Bedrooms, Family Bathroom
- Gas Central Heating, Double Glazing
- Good Size South Facing Rear Garden With Cellar
- Driveway Parking, Available With No Onward Chain
- In Catchment Of Two Grammar Schools & Close To A Primary School

Situated literally just a few minutes walk of Eden Shopping Centre, this property is superbly located for all the facilities the town centre has to offer from shopping to restaurants, leisure facilities and hospitality venues as well as transportation facilities including a bus terminus and a mainline railway station. For the motorist, Junction 4 of the M40 motorway is just a 5-minute drive.

Council Tax band: D

Tenure: Freehold

EPC Energy Efficiency Rating: D



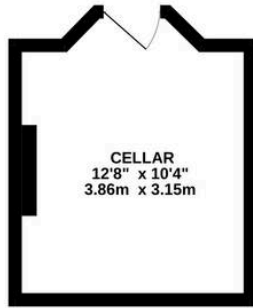
# 1 Plumer Road

High Wycombe

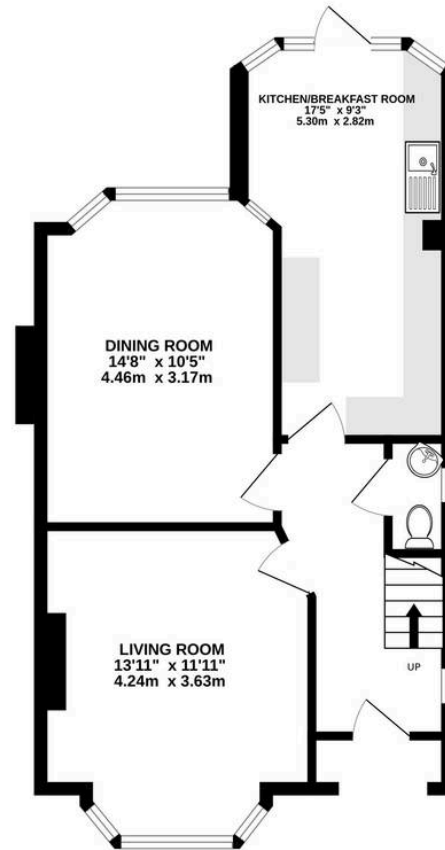
This attractive, bay fronted, detached family home offers spacious and versatile accommodation, ideally positioned within easy reach of town centre amenities and the train station. The property features; entrance hall with cloakroom, a bright living room, and a separate dining room, providing excellent space for entertaining or family gatherings. The kitchen/breakfast room is well appointed and offers ample storage and workspace, perfect for modern family living. Upstairs, there are three well-proportioned bedrooms and a family bathroom. Additional benefits include gas central heating and double glazing throughout, ensuring comfort and energy efficiency. A cellar provides useful extra storage space, while driveway parking adds further convenience. This property is offered with no onward chain, making it an ideal choice for those seeking a straightforward move. With its excellent location, generous accommodation, and practical features, this detached house represents a superb opportunity for families and professionals alike.



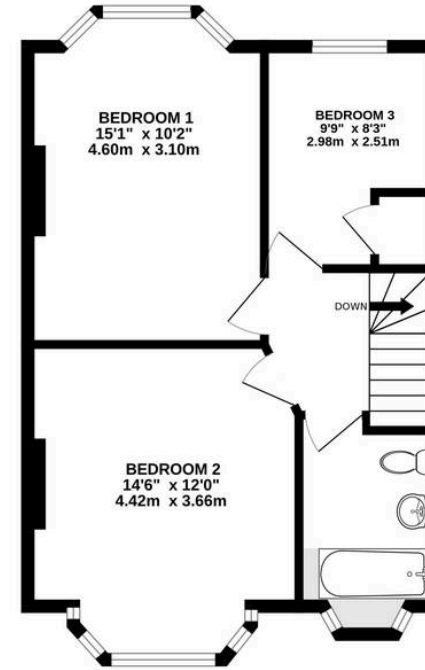
**BASEMENT**  
142 sq.ft. (13.2 sq.m.) approx.



**GROUND FLOOR**  
562 sq.ft. (52.2 sq.m.) approx.



**1ST FLOOR**  
492 sq.ft. (45.7 sq.m.) approx.



TOTAL FLOOR AREA : 1196 sq.ft. (111.1 sq.m.) approx.

Whilst every attempt has been made to ensure the accuracy of the floorplan contained here, measurements of doors, windows, rooms and any other items are approximate and no responsibility is taken for any error, omission or mis-statement. This plan is for illustrative purposes only and should be used as such by any prospective purchaser. The services, systems and appliances shown have not been tested and no guarantee as to their operability or efficiency can be given.  
Made with Metropix ©2026



# The Wye Partnership High Wycombe

Wye House, 15 Crendon Street, High Wycombe - HP13 6LE

01494 451300 • [wycombe@wyeres.co.uk](mailto:wycombe@wyeres.co.uk) • [www.wyeres.co.uk/](http://www.wyeres.co.uk/)

By law, each person involved in the sale/purchase of a property must have their identification verified to comply with Anti Money Laundering Regulations. These checks are outsourced and a charge of £36 (inc of VAT) is charged for each individual and paid directly to our supplier. |

