

Castles



ASKING PRICE

£485,000

Lincoln Road

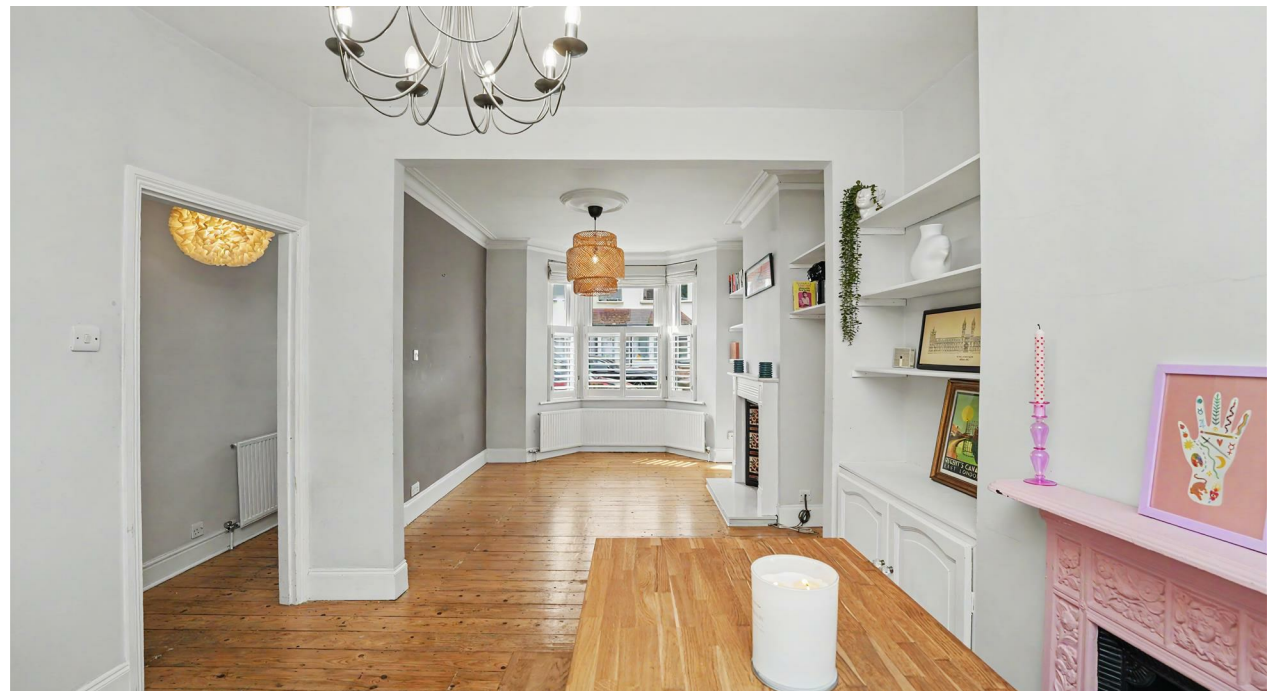
Enfield, EN1 1JX Freehold

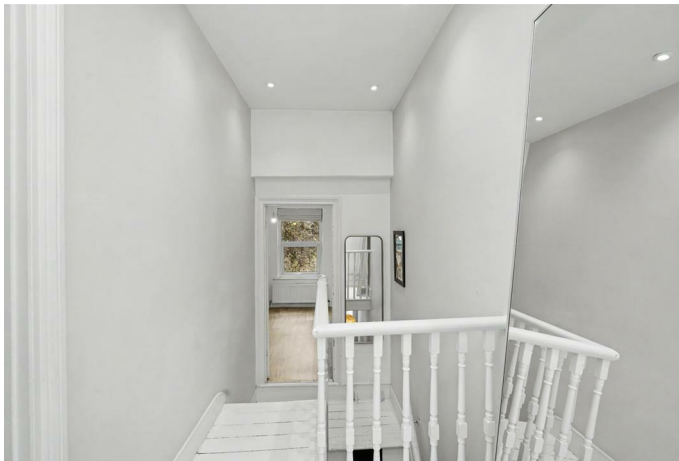
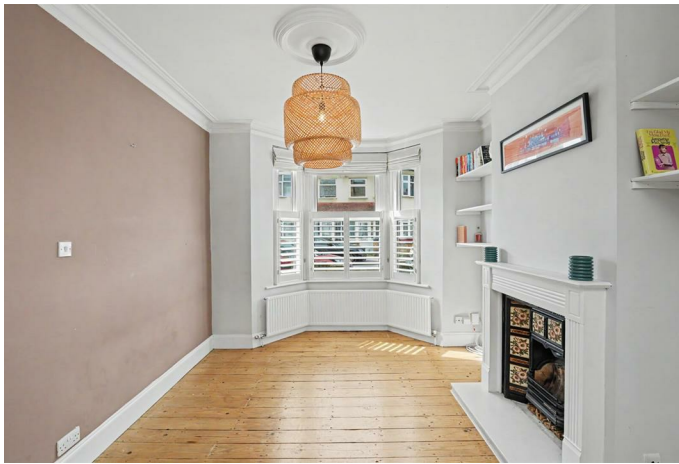
PROPERTY SUMMARY

A bay-fronted 3 double bedroom Victorian terraced house located close to Bush Hill Park and local schools and train station offering excellent commuting and less than 1 mile from Enfield Town shopping centre. The property is in good decorative order, offers spacious accommodation retaining some original features and is to be sold chain free with immediate vacant possession. Viewing is highly recommended.

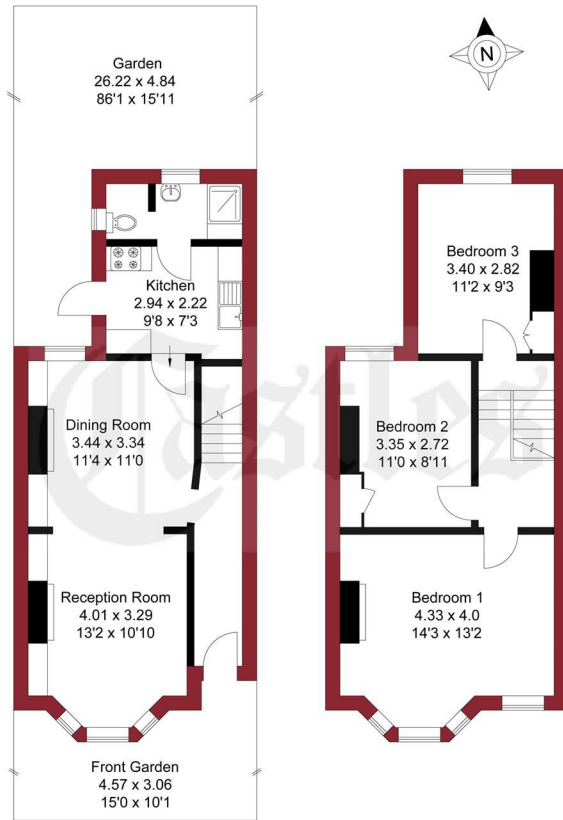
Features include:-

- Double glazing,
- Gas central heating,
- Spacious living room with 2 x feature fireplaces,
- Modern fitted kitchen,
- Ground floor bathroom,
- Large rear garden,
- High ceilings.





APPROXIMATE GROSS INTERNAL AREA
83.77 sqm / 901.69 sqft

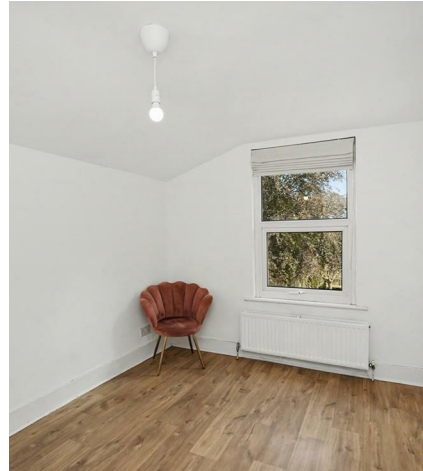


GROUND FLOOR

FIRST FLOOR

THIS PLAN IS FOR ILLUSTRATION ONLY AND MAY NOT BE REPRESENTATIVE OF THE PROPERTY

For a guide to the area please scan this code for more information



House

Freehold

Council: Enfield

Council Tax Band: D

Agents Note: Whilst every care has been taken to prepare these particulars, they are for guidance purposes only. All measurements are approximate and are for general guidance purposes only and whilst every care has been taken to ensure their accuracy, they should not be relied upon and potential buyers/tenants are advised to recheck the measurements



OFFICE ADDRESS

243 - 245 Hertford Road
Enfield
London
EN3 5JJ

OFFICE DETAILS

0208 804 8000
enfield@castles.london
<https://www.castles.london>

