



## Elm Grove, NW2

£300 Per week

This one bedroom top floor flat is ideally situated in the heart of Cricklewood with many amenities near by. The property has a bright open plan reception with a modern integrated kitchen, a double bedroom and a tiled bathroom.

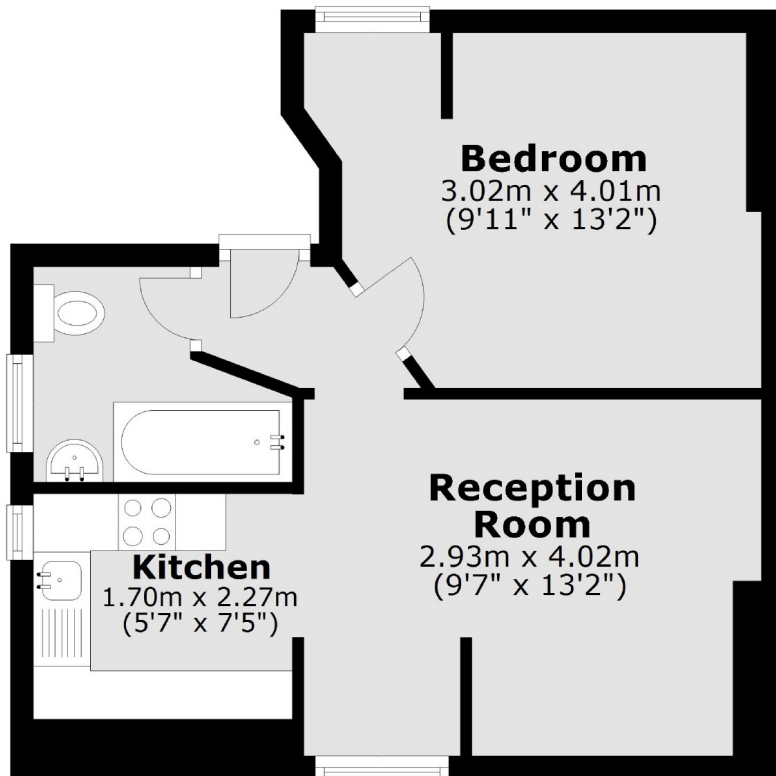
The property is located a short distance from Kilburn & Willesden Green underground stations (Jubilee Line). Nearby Cricklewood railway station provides easy access to London St. Pancras International and the City.

### Features

- One Bedroom
- Open-plan
- Integrated Kitchen
- Tiled Bathroom
- Good Storage
- Ideally Situated

# Elm Grove, London, NW2

## Third Floor



Total area: approx. 34.4 sq. metres (370.7 sq. feet)