

## Springham Walk, SE10

£675,000

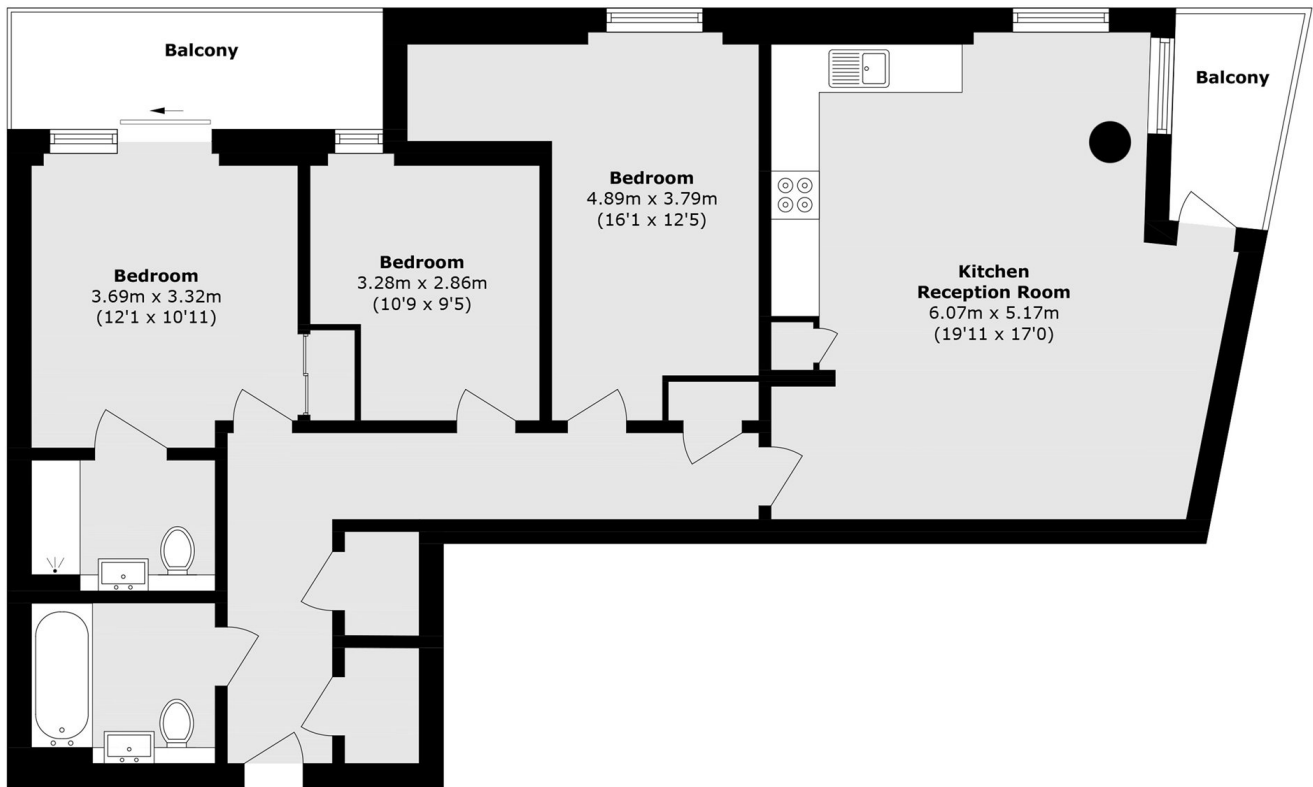
This phenomenal three bedroom two bathroom apartment is based in a modern high end development, with a 24hr concierge service, pool, gym, tennis court, playground and a private communal garden. The apartment itself boasts an open-plan living and dining area with floor-to-ceiling windows that flood the space with natural light. Further benefiting from 2 private balcony and a private parking space

The River Gardens development is located on the banks of the Thames and has a fantastic community feel near local coffee shops and pubs. It is a short walk from Greenwich Town, with its famous market and historical sights. It is near Greenwich Park where you can walk among historic sites such as the Royal Observatory and the National Maritime Museum. The development's close proximity to the River Thames allows for scenic riverside walks and easy access to various leisure activities. The location offers superb links into central

### Features

- Three Bedrooms
- Two Bathrooms
- Finish To A High Standard
- Allocated Car Parking Space
- Two Private Balcony
- Sought After Location

# Springham Walk, LONDON, SE10



Total area (approx.): 94.7 sq. m (1020.3 sq. ft)

Balcony area (approx.): 11.0 sq. m (120 sq. ft)