



MEADPROPERTY



9 Bisham House, Woodside Gardens, Marlow,

Asking Price: £375,000

9 Bisham House, Woodside Gardens, Marlow, Buckinghamshire, SL7 1FQ

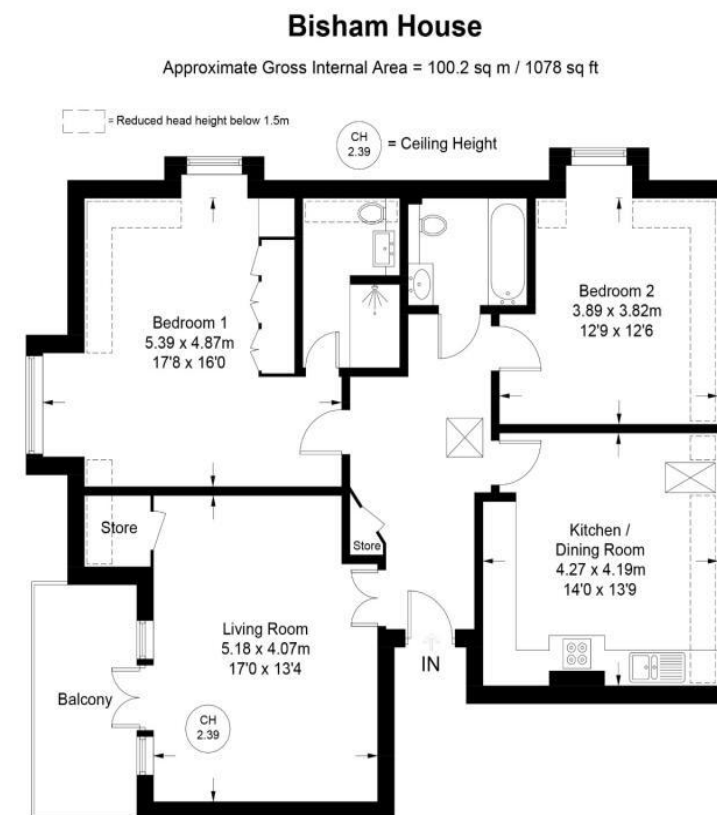
A stylish penthouse apartment situated on the outskirts of Marlow with excellent access to both the M4 and M40 motorways. The well-appointed interior is complimented by a private west facing balcony, communal gardens, and covered parking.

No onward chain.

EPC rating C, Council Tax band C

Accommodation & Amenities

- PENTHOUSE APARTMENT.
- 1.7 MILES TO MARLOW HIGH STREET.
- 2 DOUBLE BEDROOMS, 2 BATHROOMS.
- BALCONY.
- COVERED PARKING.
- NO ONWARD CHAIN.



Floor Plan produced for Kingshills by Media Arcade ©.
Illustration for identification purposes only. Window and door openings are approximate. Whilst every attempt is made to assure accuracy in the preparation of this plan, please check all dimensions, shapes and compass bearings before making any decisions reliant upon them.



