



Lovelace Road

Surbiton, KT6 6NB

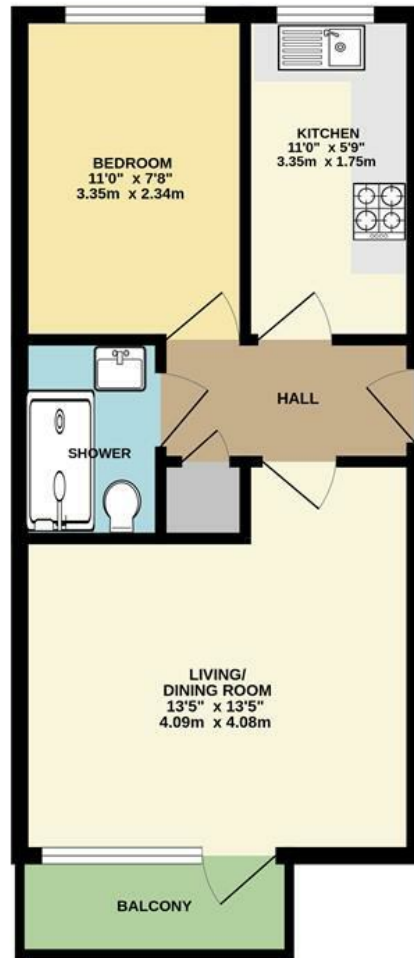
Guide Price £325,000

An extremely well presented one bedroom top floor flat with balcony. The property is situated in a leafy residential street a short walk from Surbiton town centre and mainline train station. The property offers a reception with a balcony in a southerly position, double bedroom with built in storage, a modern fitted shower room and well presented kitchen. Further benefits include a share of the freehold, bike storage, communal gardens to the rear and no onward chain. Council Tax Kingston Band C.

Material Info: Brick Walls, Roof Tiles. Water / Electricity / Sewerage: Mains. Heating: Electric. Broadband: Fibre (FTTC). Mobile Coverage: Good Outdoor, Variable In-home.

- Top Floor Apartment
- Double Bedroom
- Modern Shower Room
- Sought After Location
- Chain Free
- Reception Room With Balcony
- Built in Storage
- Separate Kitchen
- Share of Freehold

Floor Plan



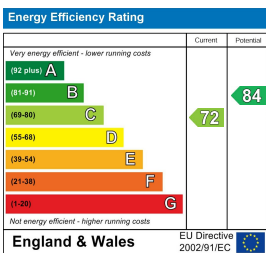
SECOND FLOOR FLAT

LOVELACE ROAD, SURBITON

INTERNAL FLOOR AREA (APPROX.) 390 sq ft/ 36.2 sq m

Whilst every attempt has been made to ensure the accuracy of this floor plan, measurement of doors, windows, rooms and any other items are approximate and no responsibility is taken for any error, omission or mis-statement. Made with Metropix © 2026.

Energy Efficiency Graph



These particulars, whilst believed to be accurate are set out as a general outline only for guidance and do not constitute any part of an offer or contract. Intending purchasers should not rely on them as statements of representation of fact, but must satisfy themselves by inspection or otherwise as to their accuracy. No person in this firm's employment has the authority to make or give any representation or warranty in respect of the property.