



## Carisbrooke Avenue

Watford, WD24 4HU

**£650,000**



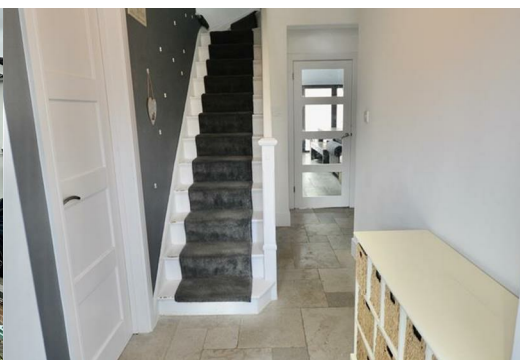
This well-presented extended four-bedroom semi-detached home is located on Carisbrooke Avenue, North Watford.

The ground floor features an inviting entrance hall, a bright and airy living room, and a stunning open-plan kitchen/dining area complete with modern fitted kitchen with integral appliances and large bi-folding doors that open directly onto the low-maintenance rear garden—perfect for indoor-outdoor entertaining. A convenient ground floor cloakroom and shower/wet room complete the downstairs space.

Upstairs, the property offers three generous double bedrooms, a well-proportioned single bedroom, and a stylish family bathroom.

Additional benefits include off-street parking to the front, solar panel energy and proximity to a range of excellent local schools. Nearby shops and amenities are within easy walking distance, with the extensive facilities of Watford town centre just 1.5 miles away.

The property is ideally positioned for commuters, offering easy access to Watford Junction Station, bus routes, and major road links.







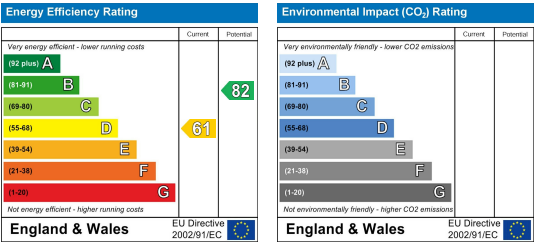
Area Map



Floor Plans



Energy Efficiency Graph



These particulars, whilst believed to be accurate are set out as a general outline only for guidance and do not constitute any part of an offer or contract. Intending purchasers should not rely on them as statements of representation of fact, but must satisfy themselves by inspection or otherwise as to their accuracy. No person in this firms employment has the authority to make or give any representation or warranty in respect of the property.