



DIBDIN HOUSE, W9

£525,000

Three Bedroom Apartment

First Floor

Balcony

Good condition

Approx. 773sq ft

Chain Free

@marshandparsons
marshandparsons.co.uk

MARSH &
PARSONS



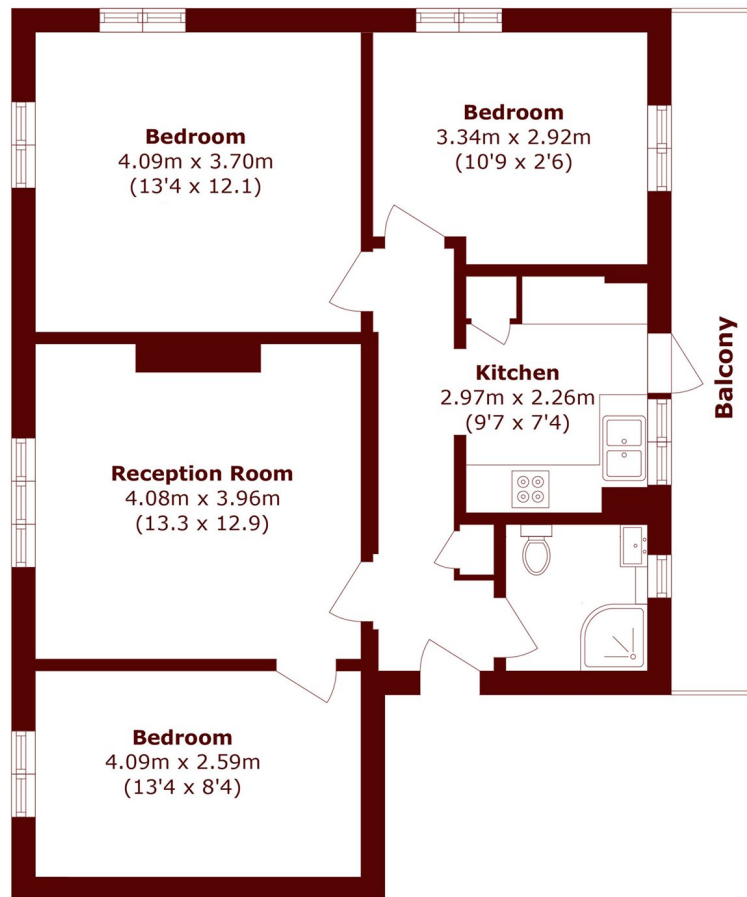
ABOUT THE PROPERTY

A bright and well proportioned three bedroom first floor apartment, presented in good condition throughout, approximately 773sq ft. The property offers a generous reception room, separate kitchen, three bedrooms, a family bathroom, ample storage and entrance hallway. A particular highlight is the covered private balcony overlooking the internal courtyard of the development.

The property is ideally situated with Maida Vale Station and Kilburn Park Station both a short walk away. Paddington Station is also within easy reach, providing access to the Elizabeth Line, Circle & District lines, Hammersmith & City line, as well as the Heathrow Express. The green open spaces of Paddington Recreation



STEP INSIDE DIBDIN HOUSE



First Floor

Total area (approx.): 71.9 sq. m (773.9 sq. ft)

Balcony Total (approx.): 8.3 sq. m (89.3 sq. ft)

Little Venice
020 7993 3050

Energy Rating: D We aim to make our particulars both accurate and reliable. However, they are not guaranteed; nor do they form part of an offer or contract. If you require clarification on any points then please contact us, especially if you're traveling some distance to view. Please note that appliances and heating systems have not been tested and therefore no warranties can be given as to their good working order

MARSH &
PARSONS