



KINGSTONS



Newleaze Park

Broughton Gifford, Melksham SN12 8PJ

- No Chain
- Two modern bathrooms
 - Good size garden
- Four good size bedrooms
- En-suite main bedroom
- Two reception rooms
- Parking for up to four vehicles
- Popular village location

Asking Price £385,000 Freehold



Hallway

External door and window to front elevation, radiator, stairs to first floor and opening to kitchen/diner.

Kitchen/Diner

11'5" x 18'1"

Fitted with a matching range of base and eye level units with worktop space over, 1+1/2 bowl stainless steel sink, space for fridge and dishwasher, built-in eye level double oven and four ring ceramic hob, window to rear elevation, radiator, sliding doors to garden and double doors to living room.



Living Room

13'3" x 11'11"

Window to front elevation, under stairs storage and radiator.

Kitchen

11'1" x 9'3"

Fitted with a matching range of base and eye level units with worktop space over, stainless steel sink, fitted fan assisted double oven, window to rear elevation and cupboard.

Reception Room

10'4" x 9'3"

Window to front elevation, fitted storage cupboard and radiator.

Landing**Bedroom One**

11'1" x 9'5"

Window to rear elevation, fitted wardrobes, radiator and opening to en-suite.

En-suite

Fitted with a three piece suite comprising wash hand basin, WC and shower enclosure, skylight, fitted cupboards and heated towel rail.

Bedroom Two

12'3" x 8'11"

Window to front elevation and radiator.

Bedroom Three

9'3" x 11'11"

Window to rear elevation and radiator.

Bedroom Four

10'10" x 9'6"

Window to front elevation, fitted wardrobes and radiator.

Bathroom

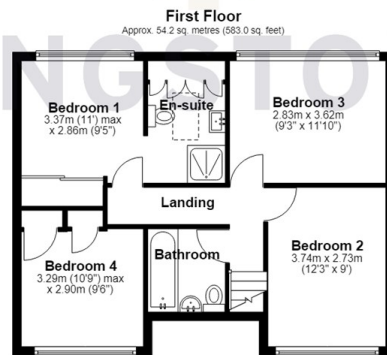
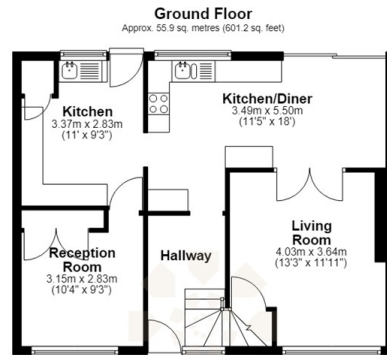
Fitted with three piece suite comprising bath with shower over, wash hand basin and WC with heated towel rail.

Outside

Driveway parking for up to approx. four vehicles, enclosed rear garden with side access and outbuildings with power.



Local Authority **Wiltshire**
Council Tax Band **C**
EPC Rating



Total area: approx. 110.0 sq. metres (1184.2 sq. feet)



KINGSTONS
Melksham Office

11 High Street, Melksham,
Wiltshire, SN12 6JR

Contact

01225709115
sales@kingstons.biz
www.kingstons.biz

Agents Note: Whilst every care has been taken to prepare these particulars, they are for guidance purposes only. All measurements are approximate and for general guidance purposes only and whilst every care has been taken to ensure accuracy, they should not be relied upon and potential buyers/tenants are advised to recheck the measurements.

