

for sale

£155,000



Moredon Park Swindon SN2 2LX

Situated in the highly sought-after MOREDON, this well-presented TWO BEDROOM MAISONETTE offers spacious accommodation. ALLOCATED PARKING. GARDEN



Moredon Park Swindon SN2 2LX

Accommodation Details

Entrance Hall

stairs rising to the accommodation

Landing

Access to all rooms.

Lounge

17' 3" x 11' 10" (5.26m x 3.61m)

Two double glazed window to the front aspect. Electric fire place. Electric radiator.

Kitchen

10' 5" x 8' 7" (3.17m x 2.62m)

Double glazed window to the rear aspect. Full fitted kitchen with base units comprising of cupboards and drawers. One and a half sink with drainer. space for oven and fridge freezer. Partially tiled tap water sensitive areas.

Bedroom One

10' 7" x 9' 11" (3.23m x 3.02m)

Double glazed window to the rear aspect. Cupboard. Electric radiator.

Bedroom Two

13' 10" x 10' (4.22m x 3.05m)

Double glazed window to the rear aspect. Electric radiator.

Bathroom

Obscure double glazed window to the side aspect. Pedestal wash hand basin and panelled bath with shower over.



Toilet

Obscure double glazed window to the side aspect. Low Level WC.

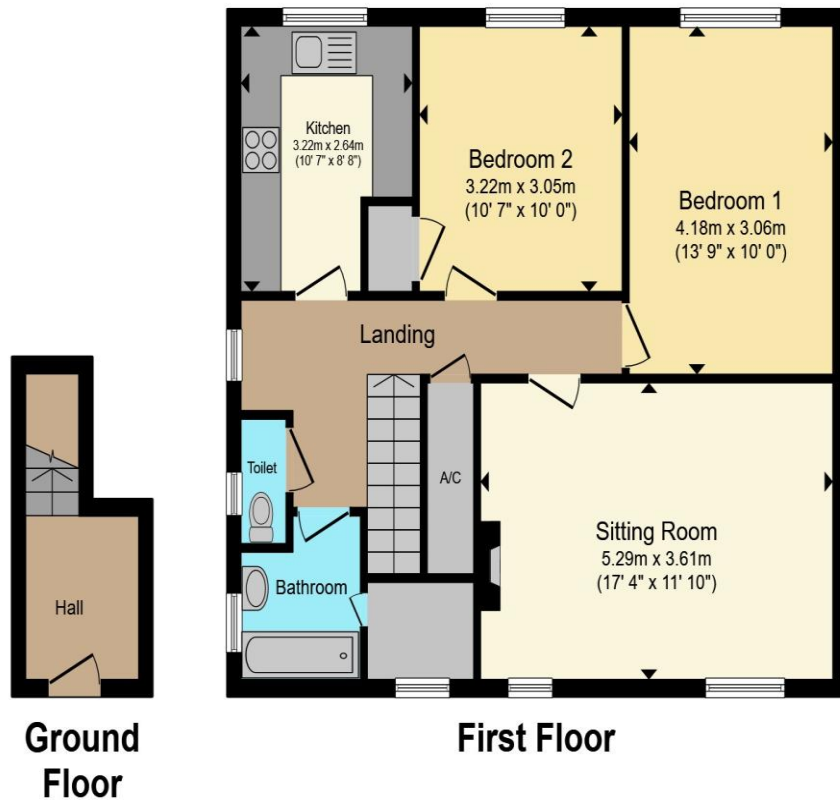
External Features Garden

Fenced boundaries. Laid to lawn. Mature shrubs and bushes. Shed.

Parking

Allocated parking





Total floor area 75.2 m² (809 sq.ft.) approx

This floor plan is for illustrative purposes only. It is not drawn to scale. Any measurements, floor areas (including any total floor area), openings and orientation are approximate. No details are guaranteed, they cannot be relied upon for any purpose and they do not form part of any agreement. No liability is taken for any error, omission or misstatement. A party must rely upon its own inspection(s). Powered by www.propertybox.io



To view this property please contact Connells on

T 01793 708050
E swindonnorth@connells.co.uk

Unit B11 North Swindon District Centre Thamesdown Drive
 SWINDON SN25 4AN

Property Ref: SDN314716 - 0004

Tenure:Leasehold EPC Rating: E

Council Tax Band: A Service Charge: Ask Agent

Ground Rent: Ask Agent

view this property online connells.co.uk/Property/SDN314716

This is a Leasehold property. We are awaiting further details about the Term of the lease. For further information please contact the branch. Please note additional fees could be incurred for items such as Leasehold packs.

1. MONEY LAUNDERING REGULATIONS Intending purchasers will be asked to produce identification documentation at a later stage and we would ask for your co-operation in order that there will be no delay in agreeing the sale. 2. These particulars do not constitute part or all of an offer or contract. 3. The measurements indicated are supplied for guidance only and as such must be considered incorrect. Potential buyers are advised to recheck measurements before committing to any expense. 4. We have not tested any apparatus, equipment, fixtures, fittings or services and it is in the buyers interest to check the working condition of any appliances.

Connells Residential is registered in England and Wales under company number 1489613, Registered Office is Cumbria House, 16-20 Hockliffe Street, Leighton Buzzard, Bedfordshire, LU7 1GN. VAT Registration Number is 500 2481 05.



see all our properties at www.connells.co.uk | www.rightmove.co.uk | www.zoopla.co.uk