



## Clapham Common South Side,

£2,100 Per calendar month

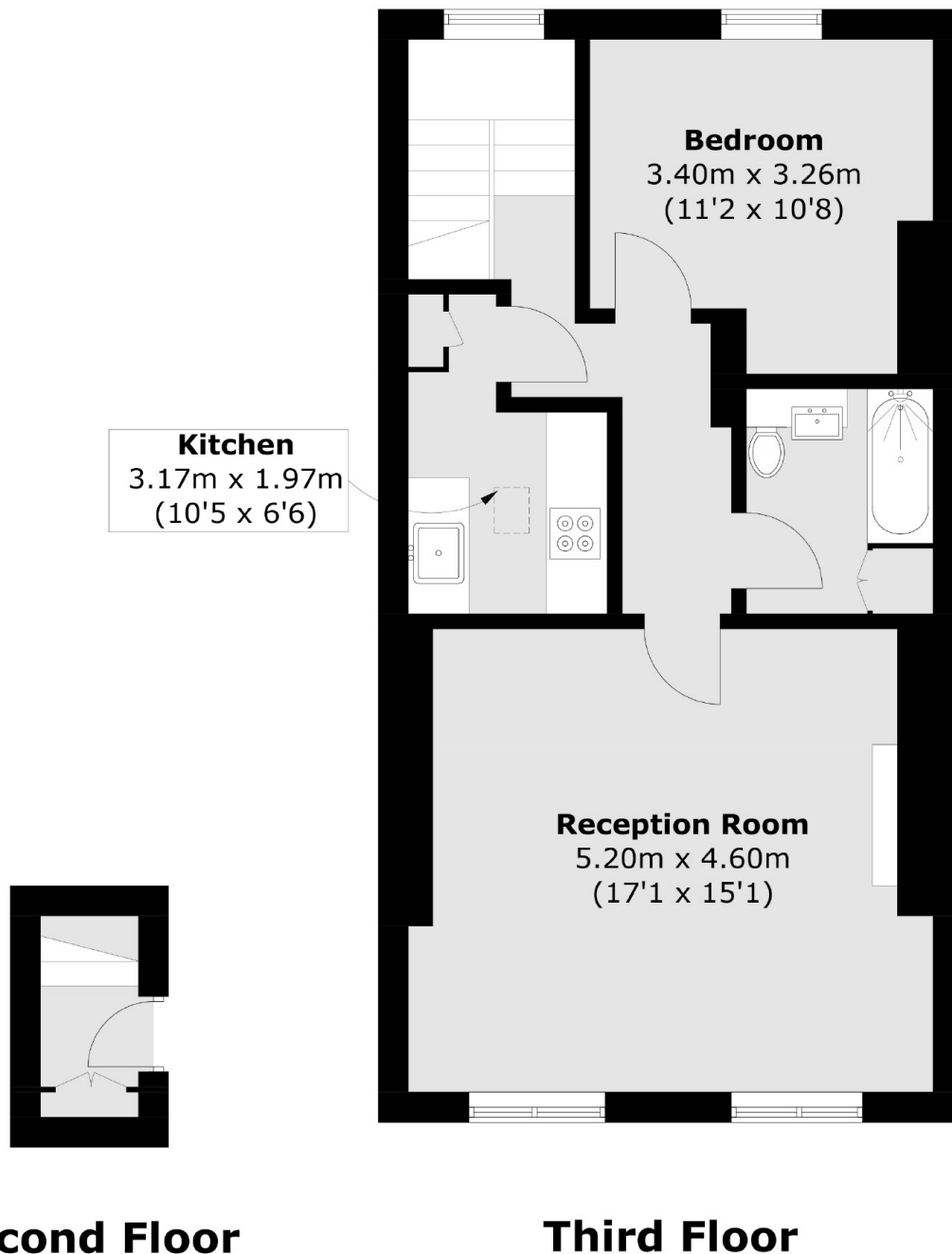
A lovely one double bedroom flat in the heart of Clapham. Offering a spacious reception with room for dining, a modern kitchen, contemporary bathroom, neutral interior and wooden flooring throughout.

Ideally located for the many local boutique shops, restaurants and cafés of Abbeville Village. Along with Clapham Common and Clapham South stations nearby.

### Features

- One Double Bedroom
- Top Floor Flat
- Spacious Reception Room
- Modern Kitchen
- Neutral Interior
- Ideal Location

# Clapham Common South Side, London, SW4



Total area (approx.): 56.3 sq. m (605.4 sq. ft)