



Trinity Church Square, SE1

£550,000

A very rarely available Georgian conversion, overlooking Trinity Church Square on the Western terrace, with an open plan living room and kitchen, two bedrooms, and a three piece bathroom. This is a chain free sale, with permit parking available. Offers in excess of £550,000

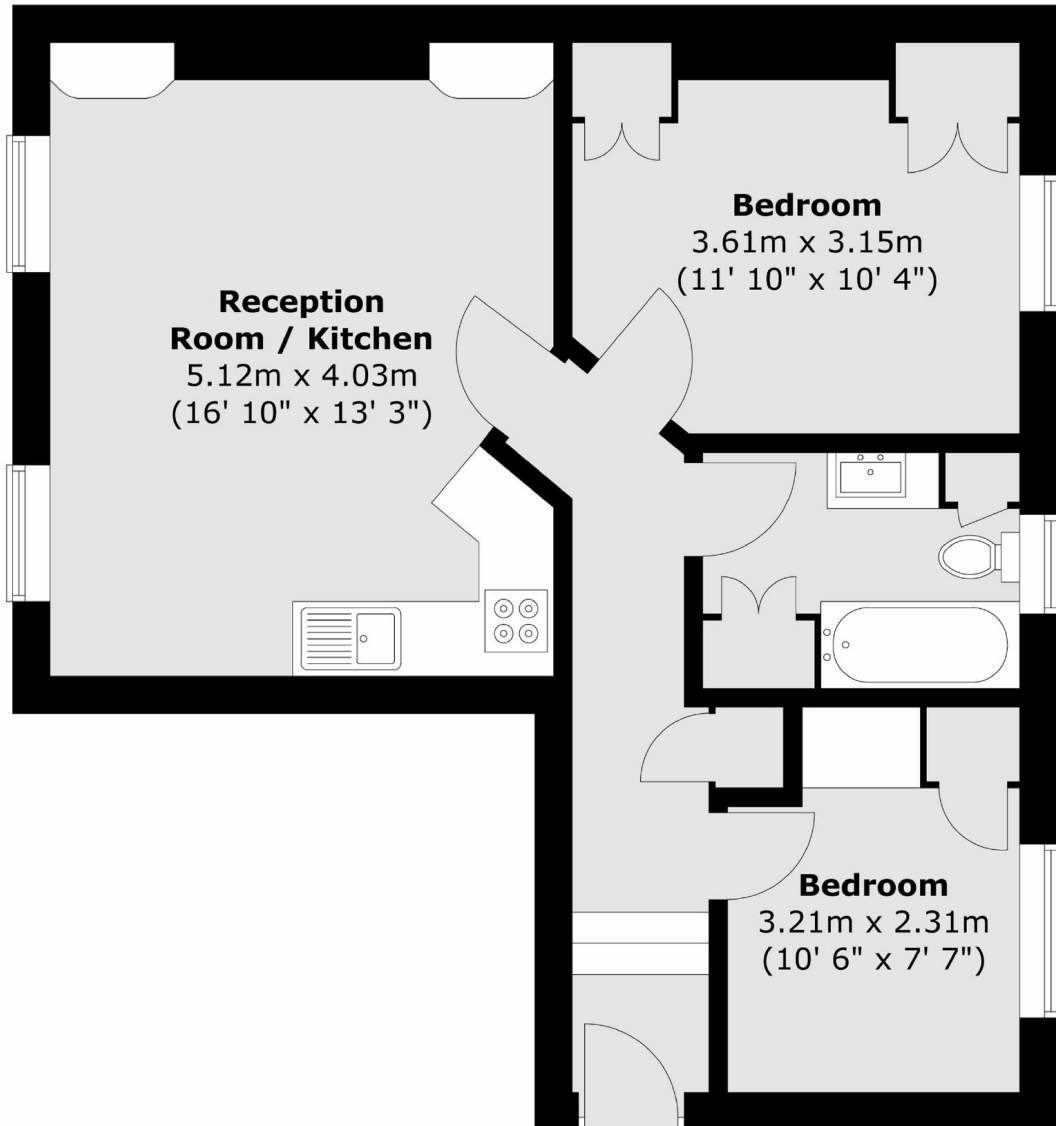
The historic Trinity Church Square is one of the most desirable locations in SE1, with a genuine community spirit. You are moments away from Borough station, the vibrancy of London Bridge, the iconic Borough Market, the eclectic Bermondsey Street, and the cultural hub of the Southbank

Features

- Offers in excess of £550,000
- Georgian Conversion
- Second Floor Flat
- Two Bedrooms
- Open Plan Living
- Overlooking the Square
- Chain Free Sale

Trinity Church Square, London, SE1

Second Floor



Total area (approx.) : 52 sq. m (560 sq. ft)