



Lillie Road  
Fulham, SW6

CHESTERTONS





This luxury apartment is arranged as a very bright open plan reception area with wooden flooring and bespoke kitchen, together with double bedroom, bathroom and roof terrace.

The development is situated on Lillie Road close to the green space of Normand Park and Virgin Active (gym/pool) and is just a short distance from both West Brompton and West Kensington underground stations.

A large selection of international shops and restaurants can also be found just around the corner of North End Road.

- Newly built luxury apartment
- Open plan kitchen/reception area
- Double bedroom, bathroom
- Private roof terrace

Asking Price £575,000

**Tenure:** Leasehold  
**Service Charge:** TBC  
**Ground Rent:** TBC  
**Local Authority:** Hammersmith & Fulham  
**Council Tax Band:** NA

*Chestertons Fulham Road Sales*

654 Fulham Road  
Fulham  
London  
SW6 5RU

fulham@chestertons.co.uk  
020 7384 9898

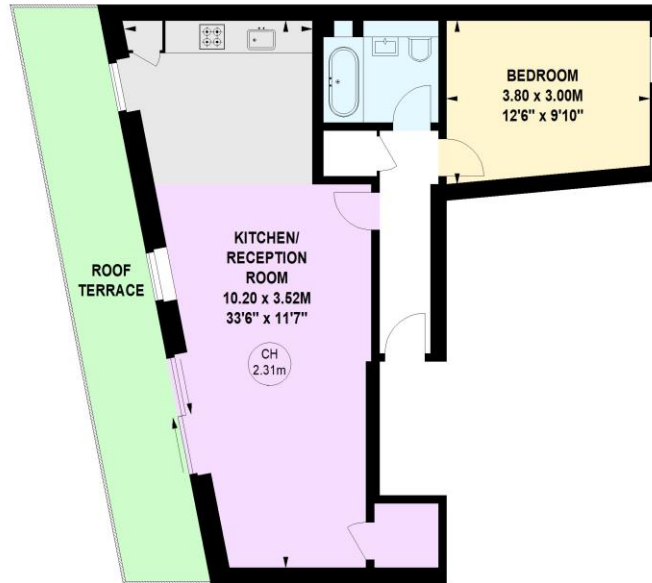
## Lillium House, SW6

Approximate gross internal area

57.97 sq m / 624 sq ft



Key :  
CH - Ceiling Height



### Third Floor

The floor plan is not to scale and measurements and areas shown are approximate and therefore should be used for illustrative purposes only. The plan has been prepared in accordance with the RICS code of Measuring Practice and whilst we have confidence in the information produced, it must not be relied on. If there is any aspect of particular importance, you should carry out or commission your own inspection of the property.

