

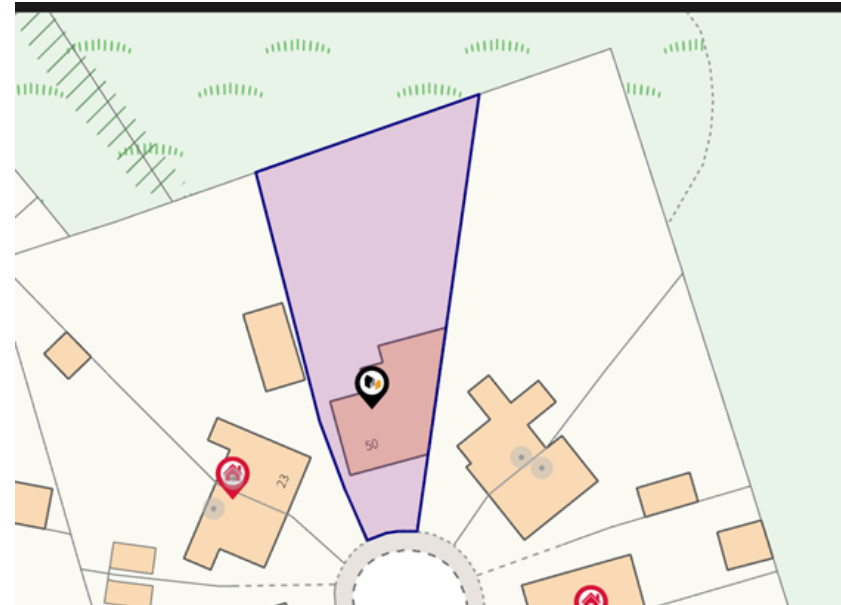


50 Dorrington Road,

£350,000

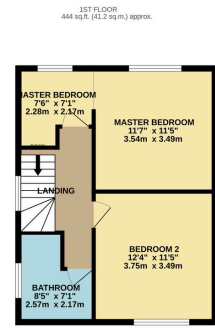
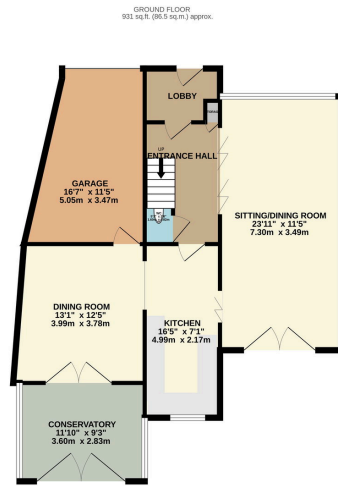
🛏 2 🚿 2 🚗 2

- Requiring Full Modernisation
- Extensive Ground Floor Space
- Family Bathroom & Ground Floor Wash Room
- Close to Motorway Network
- Offered For Sale with No Chain
- Two Double Bedroom with Potential to Convert Back to 3.
- Quiet Cul De Sac Location
- Tenure - Freehold / EPC - E / Council Tax Band - C



This spacious and extended detached home on Donnington Avenue, Cheadle Heath, sits on a substantial plot with large gardens, driveway parking, and potential for further development (subject to permissions). Originally a three-bedroom property, it has been reconfigured into two large double bedrooms, offering flexible and versatile living space with the option to convert back if desired. The property features a welcoming hallway, spacious lounge, extended dining and sitting areas, and a well-sized kitchen with ample storage. The ground floor extensions provide generous accommodation suited to family living, entertaining, or home working. Ideally located near local amenities, schools, and excellent transport links, this home combines spacious living, flexibility, and future potential in a popular residential area.





TOTAL FLOOR AREA: 1377 sq.ft. (127.7 sq.m.) approx.
While every effort has been made to ensure the accuracy of the floorplan contained herein, measurements of plots, sections, rooms and any other items are approximate and no responsibility is taken for any error, omission or misstatement. This plan is for illustrative purposes only and should be used as such by any prospective purchaser. The services, fixtures or fittings shown here are for illustrative purposes and no guarantee as to their availability or efficiency can be given.
Made with Metreplan 12/05

