



## Fishponds Road, SW17

£750,000

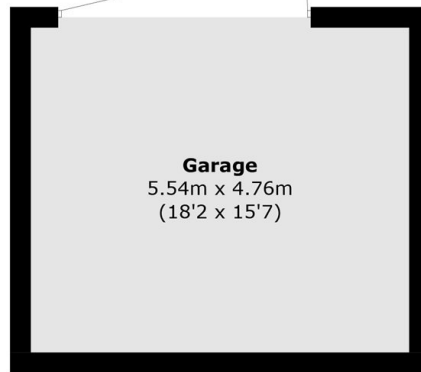
A large mid terrace home in the heart of Tooting with three bedrooms, two reception rooms, a fitted kitchen and ample space for extending (STPP) via the loft and private garden. The property is sold chain free & benefits from off-street parking.

Fishponds Road is conveniently located for the bustling shops, bars and amenities of central Tooting with the infamous Tooting Market also on the doorstep. Excellent transport links of Tooting Broadway Underground tube station is also within walking distance.

### Features

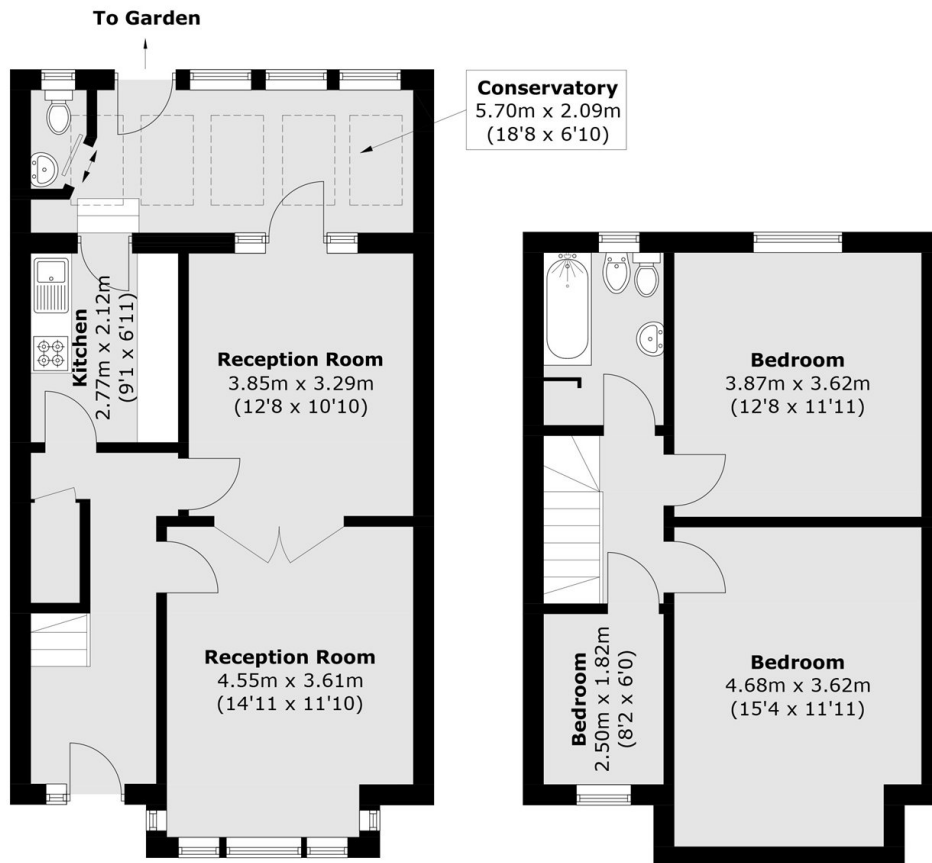
- Three Bedrooms
- Chain Free
- Potential to Extend (STPP)
- Double Reception Room
- Central Location
- Off-Street Parking

# Fishponds Road, London, SW17



**Garage**  
5.54m x 4.76m  
(18'2 x 15'7)

(Not Shown In Actual  
Location / Orientation)



To Garden

**Conservatory**  
5.70m x 2.09m  
(18'8 x 6'10)

**Kitchen**  
2.77m x 2.12m  
(9'1 x 6'11)

**Reception Room**  
3.85m x 3.29m  
(12'8 x 10'10)

**Reception Room**  
4.55m x 3.61m  
(14'11 x 11'10)

**Bedroom**  
3.87m x 3.62m  
(12'8 x 11'11)

**Bedroom**  
2.50m x 1.82m  
(8'2 x 6'0)

**Bedroom**  
4.68m x 3.62m  
(15'4 x 11'11)

**Ground Floor**

**First Floor**

Total area (approx.): 105.3 sq. m (1,133.5 sq. ft)  
Garage (approx.): 26.9 sq. m (289.5 sq. ft)