



OVER 60?

Secure this property
for up to **59% less!**

Guide Price
£200,000

Freehold

2x  1x  1x 

**Lower Flat, St. Chad's
Avenue, Portsmouth,
Hampshire, PO2**

cubitt & west
Helping you move forwards



Main features

- Ground floor flat with own garage
- Spacious accommodation throughout
- Popular Hilsea location
- Close to all local daily amenities
- Great school catchment area & transport links

Accommodation

GROUND FLOOR

Entrance Hallway

Lounge: 17'8 x 13'9 (5.39m x 4.19m)

Kitchen/Diner: 27'8 x 8'8 (8.44m x 2.64m)

Bedroom 1: 17'8 x 15'8 (5.39m x 4.78m)

Bedroom 2: 13'1 x 8'5 (3.99m x 2.57m)

Bathroom

OUTBUILDING

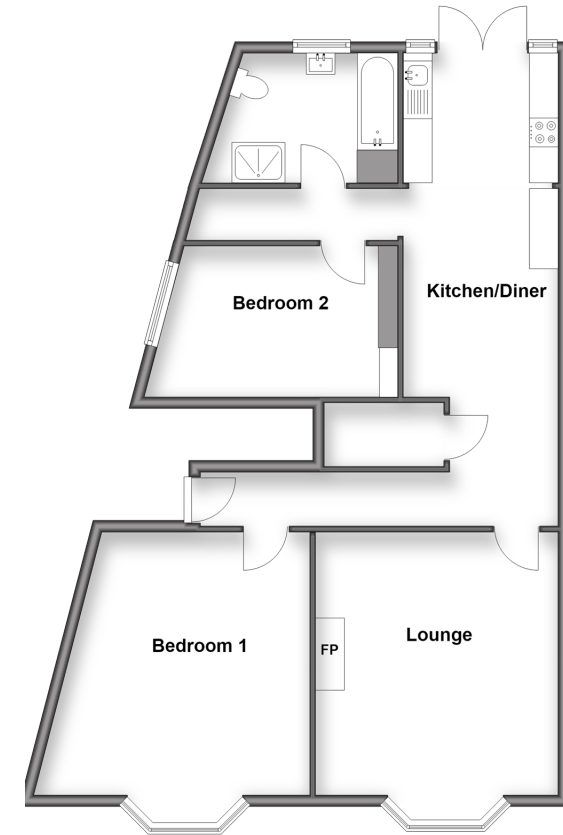
Store Room

OUTSIDE

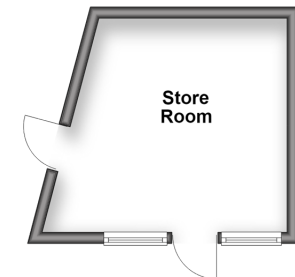
Garage

Shared Garden

Ground Floor
Approx. 89.1 sq. metres (959.5 sq. feet)



Outbuilding
Approx. 13.9 sq. metres (149.8 sq. feet)



Call Portsmouth - 023 9266 1213 ■ cubittandwest.co.uk

- If buying to rent, please check if Local Authority licensing schemes apply before proceeding
- Through a Homewise Home For Life Plan people aged 60+ can secure this property for up to 59% less, by purchasing a Lifetime Lease



41635338/20260624/MO1/JG