



**POOLE  
TOWNSEND**

Plymouth Street, Walney, Barrow-in-furness, LA14 3AL

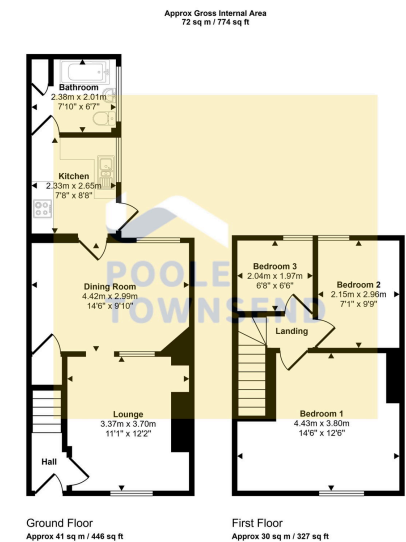
£115,000

🛏️ 3 🚿 1 🛋️ 2



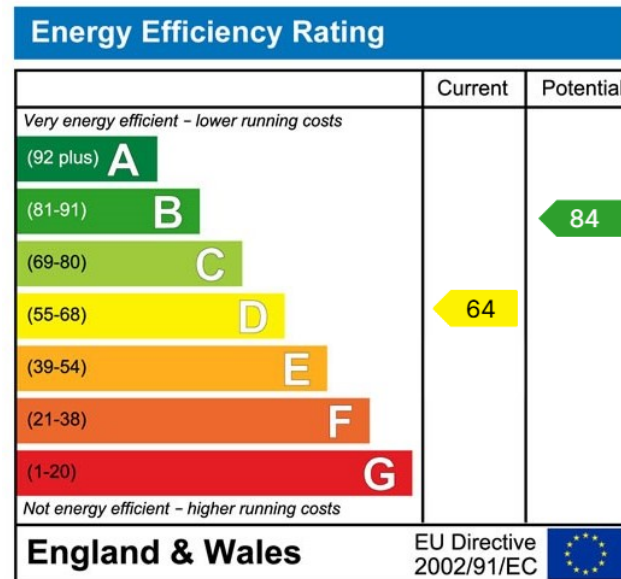
- 3 Bed Mid-Terraced Home
- Sought After Location
- 2 Reception Rooms
- Walled Yard To Rear
- UPVC Double Glazing
- Ideal For First Time Buyers & Investors
- Neutrally Decorated Throughout
- Modern Fitted Kitchen
- Gas Fired Central Heating
- NO UPPER CHAIN!!





This floorplan is only for illustrative purposes and is not to scale. Measurements of rooms, doors, windows, and any items are approximate and no responsibility is taken for any error, omission or mis-statement. Icons of items such as bathroom suites are representations only and may not look like the real items. Made with Made Easy 360.

**NEW!** This extended mid-terraced home offers well-presented, neutrally decorated accommodation and is ready for immediate occupancy with no onward chain, making it ideal for first-time buyers and investors. The property features two reception rooms, including a front lounge with a wall-mounted electric fire and a spacious dining room with under-stairs storage. The modern fitted kitchen includes integrated appliances and access to the rear yard, along with a ground floor bathroom fitted with a white suite. To the first floor are three bedrooms, including a generous double to the front. Further benefits include gas-fired central heating, UPVC double glazing, and a walled rear yard with useful storage, all conveniently located close to local amenities, schools, and transport links.



Visit us at  
[www.pooletownsend.co.uk](http://www.pooletownsend.co.uk)  
[enquiries@pooletownsend.co.uk](mailto:enquiries@pooletownsend.co.uk)

We are open  
 Monday – Friday 9.00 – 5.00  
 Saturday 9.00 – 1.00

Barrow 01229 811811  
 Ulverston 01229 588111  
 Grange 015395 33316  
 Kendal 01539 734455  
 Milnthorpe 015395 62044