



NEWINGTON
LONDON

2 Bedrooms

Apartment

Located in London

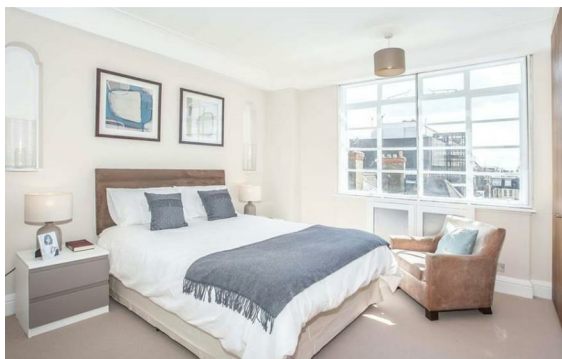
£1,225 Per Month



info@newingtonstates.com

<http://www.newingtonstates.com>

020 7724 2233



A contemporary two-bedroom, two-bathroom apartment with a private balcony, set on the second floor of a portered building with lift access in Marylebone. The property offers air conditioning, 24-hour security and concierge, and a modern finish throughout.

Comprising a bright reception room with balcony access, fitted kitchen, and two well-sized bedrooms with bathrooms, it is ideally located close to Marylebone's boutiques, cafés and restaurants.

EPC rating: B

Energy Efficiency Rating: B

Agents Note: Whilst every care has been taken to prepare these particulars, they are for guidance purposes only. All measurements are approximate and are for general guidance purposes only and whilst every care has been taken to ensure their accuracy, they should not be relied upon and potential buyers/tenants are advised to recheck the measurements.

NEWINGTON LONDON

60 Upper Montagu Street

London

W1H 1SN

020 7724 2233

info@newingtonstates.com

<http://www.newingtonstates.com>