



BLACKSHAW ROAD, SW17

£825,000

- 3 Bedroom Victorian Terrace
- Stylishly Presented Throughout
- No Onward Chain
- Extended Kitchen / Diner
- Large Family Garden
- Sought After Location





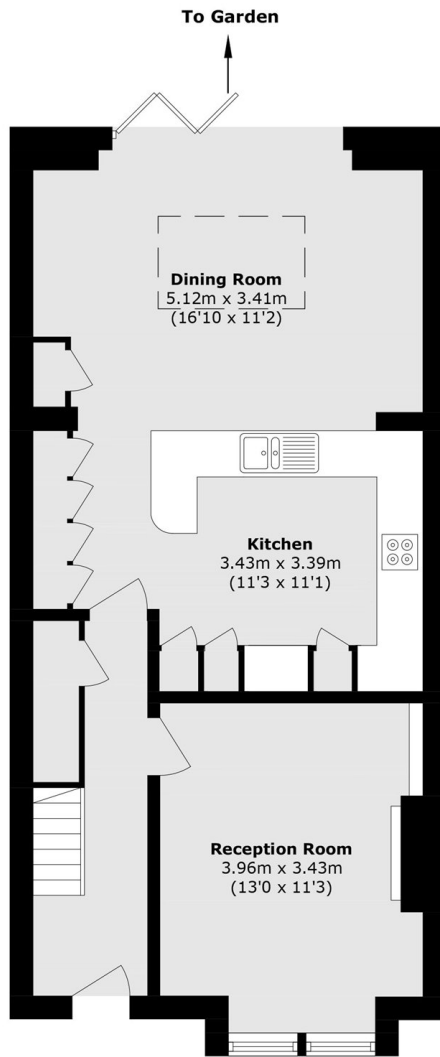
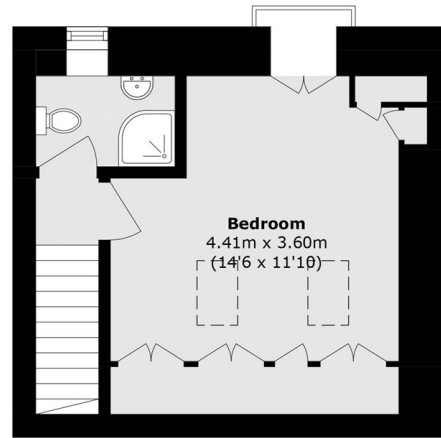
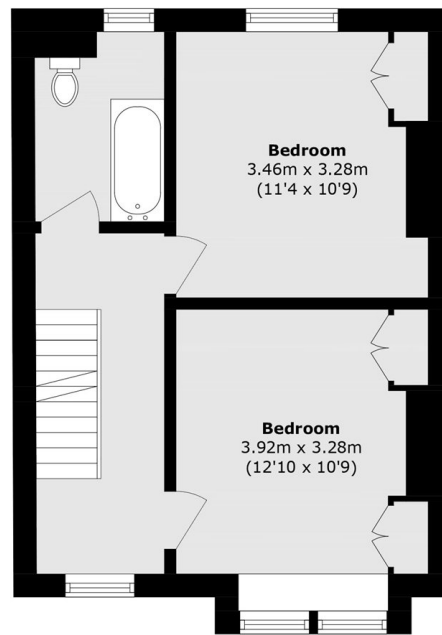
ABOUT THE HOME

A stylish 3 double bedroom, 2 bathroom Victorian terrace house. Sold with no onward chain. This spacious and well presented family home offers a generous 1266sqft. Comprising; A spacious sitting room with original period fireplace, double glazed sash windows and oak floors take you through to the expansive kitchen / diner. Offering a large breakfast bar, fully fitted kitchen with a combination of both free standing and integrated appliances. Ample room for both a large dining set as well as sofas and lastly full width bi-folding doors leading you out to a generous family garden that is a combination of Astroturf with mature borders and benefits from ample natural light. Returning inside to the first floor, there are two very spacious double bedrooms, a well appointed family bathroom. Stairs lead up into the converted loft where you will find the principal bedroom with the second bathroom.



Blackshaw Road is popular location due to its excellent transport links. With Tooting Broadway Tube, Haydons Road and Earlsfield overground stations all within easy reach. As well as highly sought after schools and St Georges University hospital on your doorstep.




Ground Floor

Second Floor

First Floor

Total area (approx.): 117.7 sq. m (1266.4 sq. ft)

JACKSONS TOOTING

3 Upper Tooting Road, London,
SW17 7TS
Sales: 020 8487 3175
Lettings: 020 8487 3176

Energy Rating: We aim to make our particulars both accurate and reliable. However they are not guaranteed; nor do they form part of an offer or contract. If you require clarification on any points then please contact us, especially if you're traveling some distance to view. Please note that appliances and heating systems have not been tested and therefore no warranties can be given as to their good working order.