

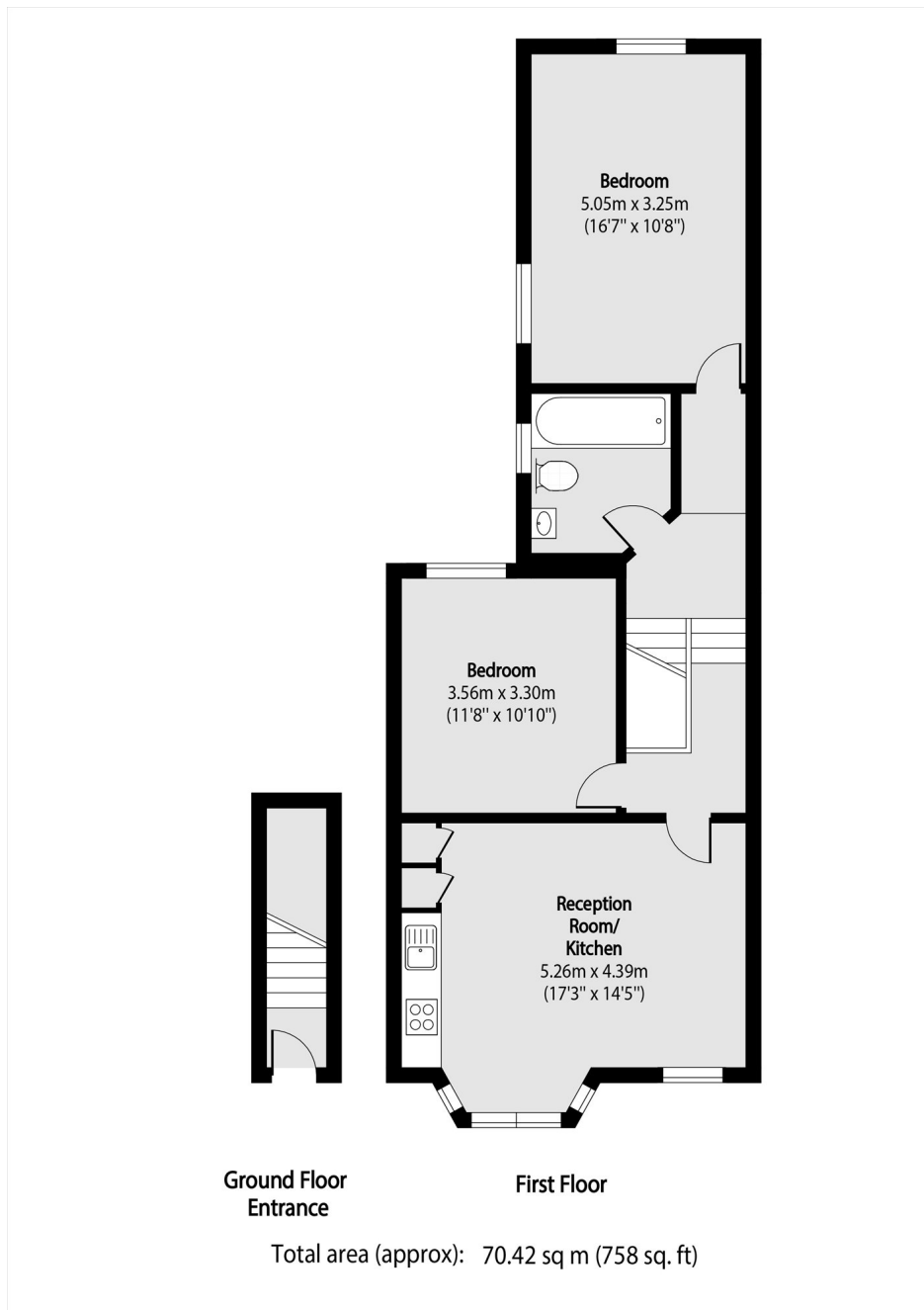


Bradley Gardens, W13

£456 pw (£1,975 pcm)

This well-presented two bedroom flat is ideal for a couple or professional sharers. The property features two generously sized bedrooms, a bright and spacious reception room and a modern fitted kitchen. Additional benefits include on-street parking.

Bradley Gardens is location less than half a mile from West Ealing (Elizabeth line) station and various shops and amenities.



Robertson Smith & Kempson Ealing Lettings
1 The Broadway,
London, W5 2NT
020 8840 7885
ealinglettings@robertsonsmithandkempson.co.uk

Energy Rating: D. We aim to make our particulars both accurate and reliable. However they are not guaranteed; nor do they form part of an offer or contract. If you require clarification on any points then please contact us, especially if you're traveling some distance to view. Please note that appliances and heating systems have not been tested and therefore no warranties can be given as to their good working order.