

shepherds  
A better home  
moving experience



27 Millstream Close

Hertford, SG14 1LJ

Price Guide £250,000



## 27 Millstream Close

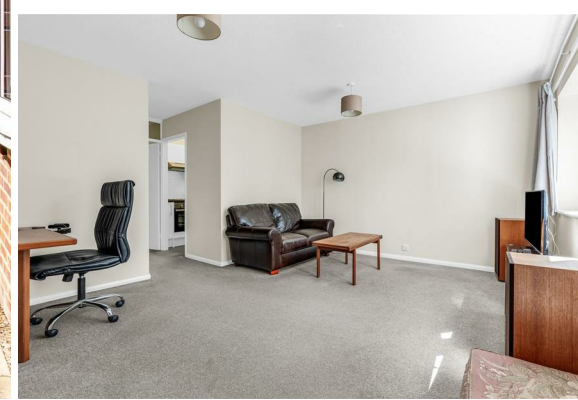
Hertford, SG14 1LJ

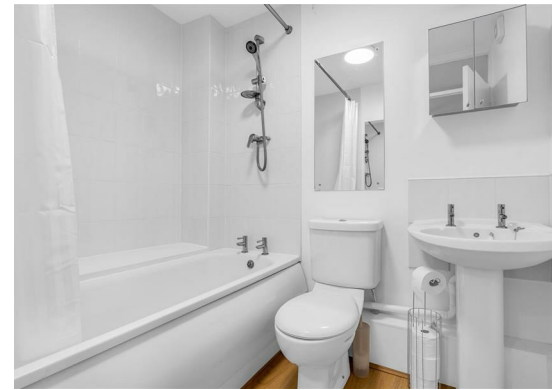
**DELIGHTFUL RIVERSIDE POSITION.** A well-presented one-bedroom ground floor maisonette ideally situated in the highly sought-after Millstream Close, just a short walk from Hertford North station and a level walk from the town centre, offering excellent links into London.

This bright and spacious home features a generous living room with large windows allowing plenty of natural light, a separate fitted kitchen, a good-sized double bedroom, and a modern bathroom. The property also benefits from a pleasant outlook, with attractive communal grounds and a nearby stream providing a peaceful setting.

Externally, the property includes an allocated parking space, as well as additional visitor parking. This maisonette presents an excellent opportunity for first-time buyers, downsizers, or investors alike.

Located within an easy walk of Hertford town centre, residents can enjoy a wide range of shops, cafés, restaurants, and green spaces, all while benefiting from superb transport connections.



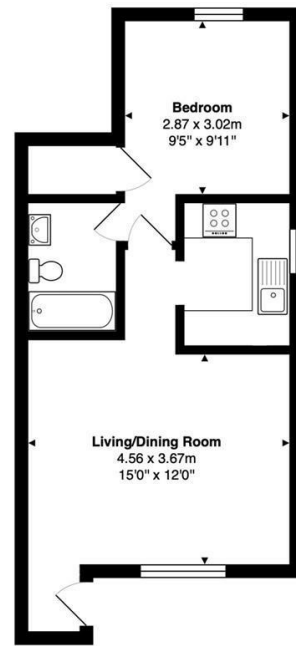


- One-bedroom ground maisonette in sought-after Millstream Close
- Prime location just moments from Hertford North station
- Bright and spacious living room with excellent natural light
- Separate fitted kitchen
- Good-sized double bedroom
- Modern bathroom suite
- Attractive setting with nearby stream and communal grounds
- Allocated parking space
- Easy walk to Hertford town centre and close to Hertford North hospital and local GP surgery

Tenure  
Leasehold - 141 years remaining  
Service Charge - £509.97 per annum to include buildings insurance  
Ground Rent - Peppercorn



## Floor Plan



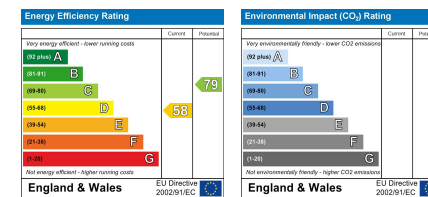
**Ground Floor**  
Area: 40.7 m<sup>2</sup> ... 438 ft<sup>2</sup>

FOR ILLUSTRATIVE PURPOSES ONLY; NOT TO SCALE.  
Whilst every attempt has been made to ensure the accuracy of the floor plan shown, all measurements, positioning, fixtures, features, fittings and any other data shown are an approximate interpretation for illustrative purposes only and are not to scale. No responsibility is taken for any error, omission, miss-statement or use of data shown.  
Property marketing provided by [www.matthewkyle.co.uk](http://www.matthewkyle.co.uk)

## Viewing

Please contact Shepherds of Hertford on 01992 551955 if you wish to arrange a viewing appointment for this property or require further information.

## Energy Performance Graph



These particulars, whilst believed to be accurate are set out as a general outline only for guidance and do not constitute any part of an offer or contract. Intending purchasers should not rely on them as statements of representation of fact, but must satisfy themselves by inspection or otherwise as to their accuracy. No person in this firm's employment has the authority to make or give any representation or warranty in respect of the property.

Riverside House, 6 Millbridge, Hertford, SG14 1PY  
Tel: 01992 551955 Email: [enquiries@shepherdsfhertford.co.uk](mailto:enquiries@shepherdsfhertford.co.uk)