




Constables
SALES & LETTINGS

Bendee Avenue Little Neston, Neston

£250,000



A traditional semi-detached bungalow located in a very popular area of Little Neston. The property has been extended to create additional living space and a utility room and the loft has been fully boarded with a Velux window fitted.

The accommodation has been well-maintained and comprises, entrance hallway, living room with opening into a dining area. The dining area a patio doors leading to the rear garden. There is a well-appointed kitchen with a good range of wooden fronted storage units, and an integrated oven, grill and gas hob. Off the kitchen is a utility room. The property has a shower room and two good sized bedrooms, the main bedroom has built in wardrobes.

Externally a driveway provides off road parking and leads to a workshop. The rear garden is incredibly private and established with lawn and mature planting.

The property is offered for sale with no onward chain.





Constables

SALES & LETTINGS

- Extended Semi-Detached Bungalow
- Two Bedrooms
- Well-appointed Kitchen & Utility Room
- Private Garden
- Off Road Parking & Workshop
- Sought After Location
- Spacious Lounge & Dining Area
- Boarded Loft with Velux Window
- No Onward Chain

Entrance Hallway

Living Room

13'7" x 11'1" (4.15m x 3.39m)

Dining Area

6'9" x 12'11" (2.08m x 3.95m)

Kitchen

8'1" x 8'7" (2.47m x 2.62m)

Utility Room

6'9" x 6'9" (2.08m x 2.06m)

Bedroom One

12'6" x 11'1" into wardrobe (3.82m x 3.39m into wardrobe)

Bedroom Two


7'8" x 8'7" (2.35m x 2.62m)

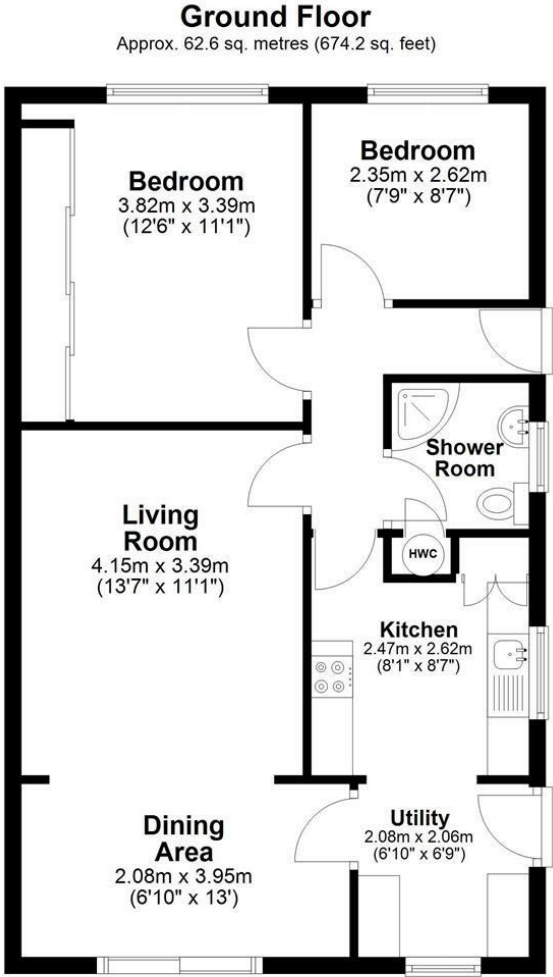
Shower Room



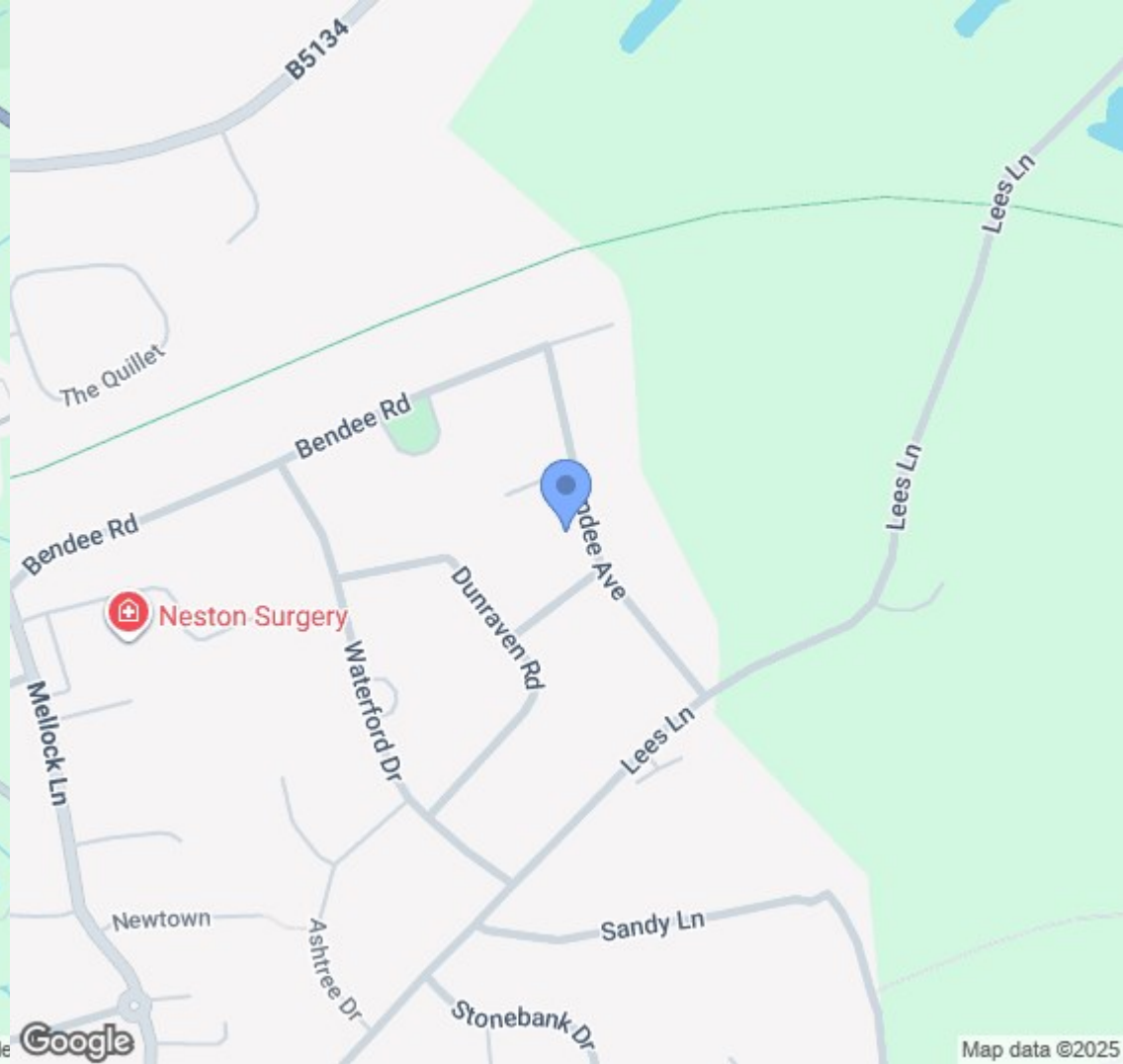
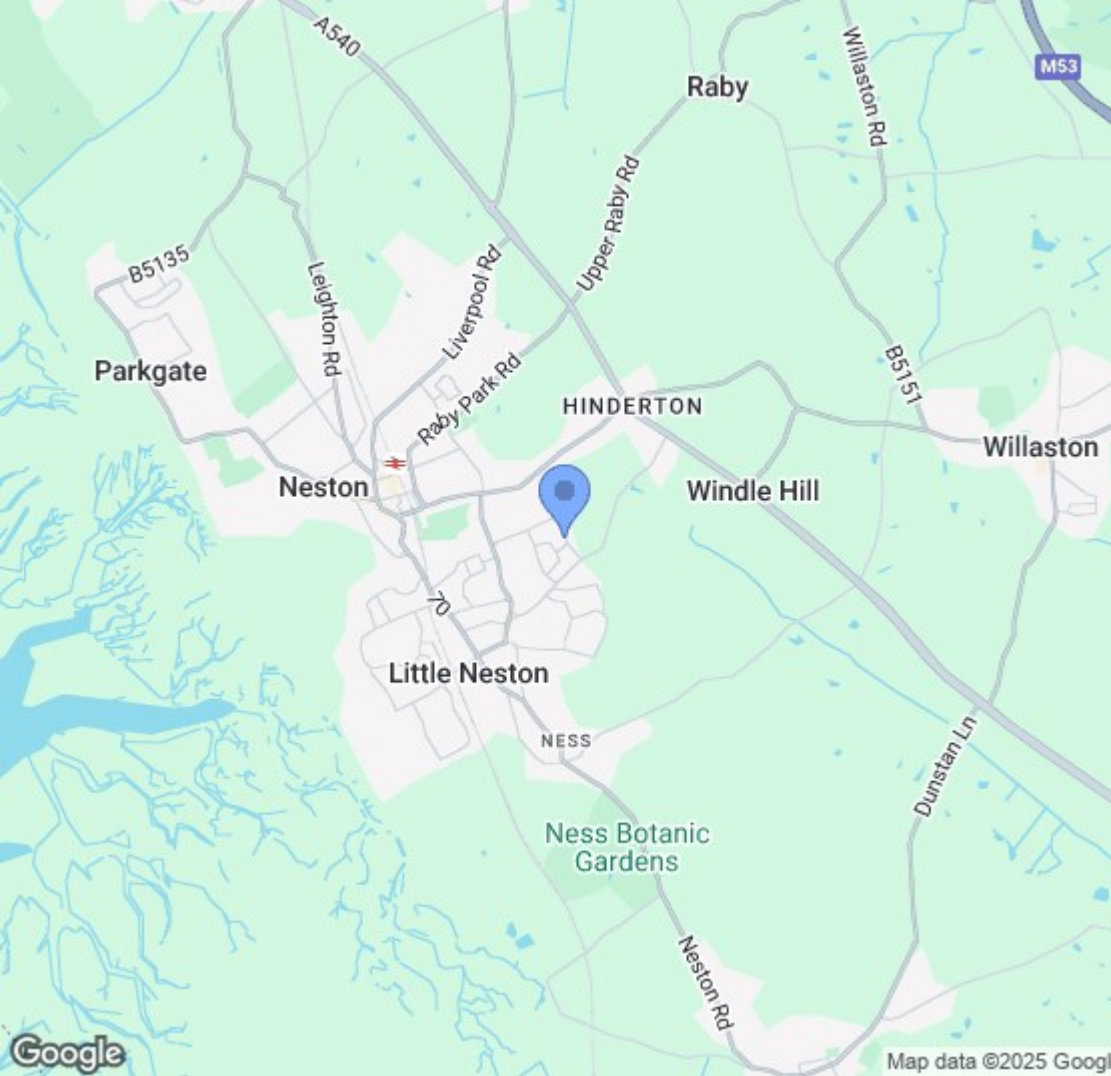


EPC & Floor Plan

| Energy Efficiency Rating | | |
|---------------------------------------------|----------------------------|-----------------------------------------------------------------------------------|
| | Current | Potential |
| Very energy efficient - lower running costs | | |
| (92 plus) A | | |
| (81-91) B | | |
| (69-80) C | | 77 |
| (55-68) D | 63 | |
| (39-54) E | | |
| (21-38) F | | |
| (1-20) G | | |
| Not energy efficient - higher running costs | | |
| England & Wales | EU Directive 2002/91/EC |  |



Total area: approx. 62.6 sq. metres (674.2 sq. feet)
15 Bendee Avenue, Little Neston, NESTON



Location Map

Constables

S A L E S & L E T T I N G S

21 High Street, Neston

South Wirral, Neston, Cheshire

www.constablesestateagents.co.uk

info@constablesestateagents.co.uk

0151 353 1333