



 Stuart
Rushton

 Stuart
Rushton
& COMPANY

Row of Trees House, 59 Knutsford Road, Alderley Edge – SK9 7SH
£1,625,000







Row of Trees House, 59 Knutsford Road

Alderley Edge

A charming Grade II Listed family house set within lovely landscaped gardens and grounds, in all about 1.25 acres, enjoying a wonderful rural backdrop, situated incredibly conveniently on the outskirts of Wilmslow and Alderley Edge.

Council Tax band: G

Tenure: Freehold

EPC Energy Efficiency Rating: D

- Incredibly pretty Grade II listed period house on the outskirts of Alderley Edge
- Four bedrooms, three bathrooms and four reception rooms
- Private landscaped gardens, double garage, and paddock, in all about 1.25 acres
- Lovely open views yet five minutes to Wilmslow and Alderley Edge





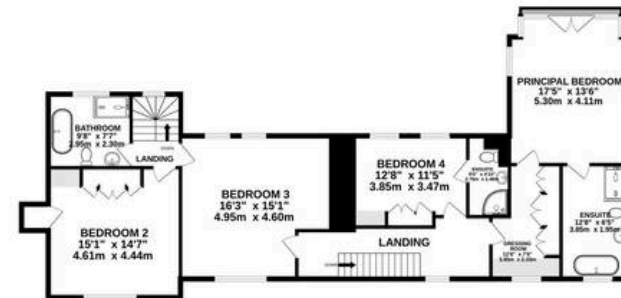
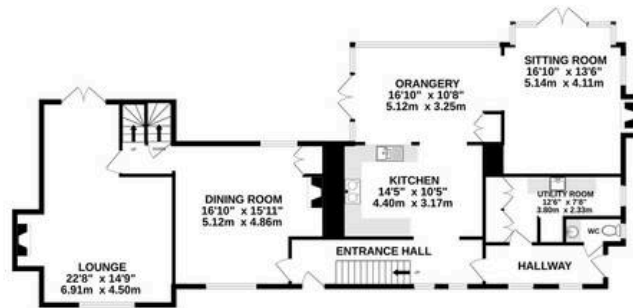


BASEMENT
77 sq.ft. (7.1 sq.m.) approx.

GROUND FLOOR
1555 sq.ft. (144.3 sq.m.) approx.

1ST FLOOR
1356 sq.ft. (125.3 sq.m.) approx.

2ND FLOOR
1559 sq.ft. (144.3 sq.m.) approx.



TOTAL FLOOR AREA : 3265 sq.ft. (303.3 sq.m.) approx.

Whilst every attempt has been made to ensure the accuracy of the floorplan contained here, measurements of doors, windows, rooms and any other items are approximate and no responsibility is taken for any error, omission or mis-statement. This plan is for illustrative purposes only and should be used as such by any prospective purchaser. The services, systems and appliances shown have not been tested and no guarantee as to their operability or efficiency can be given.

Made with Metropix ©2026



Stuart Rushton & Company

Stuart Rushton & Co, 35 King Street – WA16 6DW

01565 757000

enquiries@srushton.co.uk

www.srushton.co.uk



**Stuart
Rushton**
& COMPANY

We are not authorised to make or give any representations or warranties in relation to the property either here or elsewhere. We assume no responsibility for any statement that may be made in these particulars, and they do not form part of any offer or contract and must not be relied upon as statements or representation of fact. Any areas, measurements or distances are approximate. The text, photographs and plans are for guidance only. Importantly, it should not be assumed that the property has all necessary planning, building regulations or other consents and we have not tested any services, equipment or facilities. Purchasers must satisfy themselves by inspection or otherwise.