



WESTWOODLEBER
LET US GUIDE YOU HOME

Lilac Road, Hoddesdon, EN11 0PG
Offers in excess of £385,000



Lilac Road, Hoddesdon, EN11 0PG

Westwood Leber are delighted to bring to the market this well-presented two-bedroom semi-detached home, ideally situated on the popular Lilac Road in Hoddesdon, EN11 0PG.

The property offers spacious and well-arranged accommodation throughout, commencing with a welcoming entrance hall leading into a generous living room featuring a bay window that floods the space with natural light, creating a bright and inviting environment ideal for both relaxing and entertaining. To the rear, the fitted kitchen provides ample worktop and storage space and leads through to a light-filled conservatory, offering an additional reception area overlooking the garden — perfect for dining, entertaining, or enjoying year-round use.

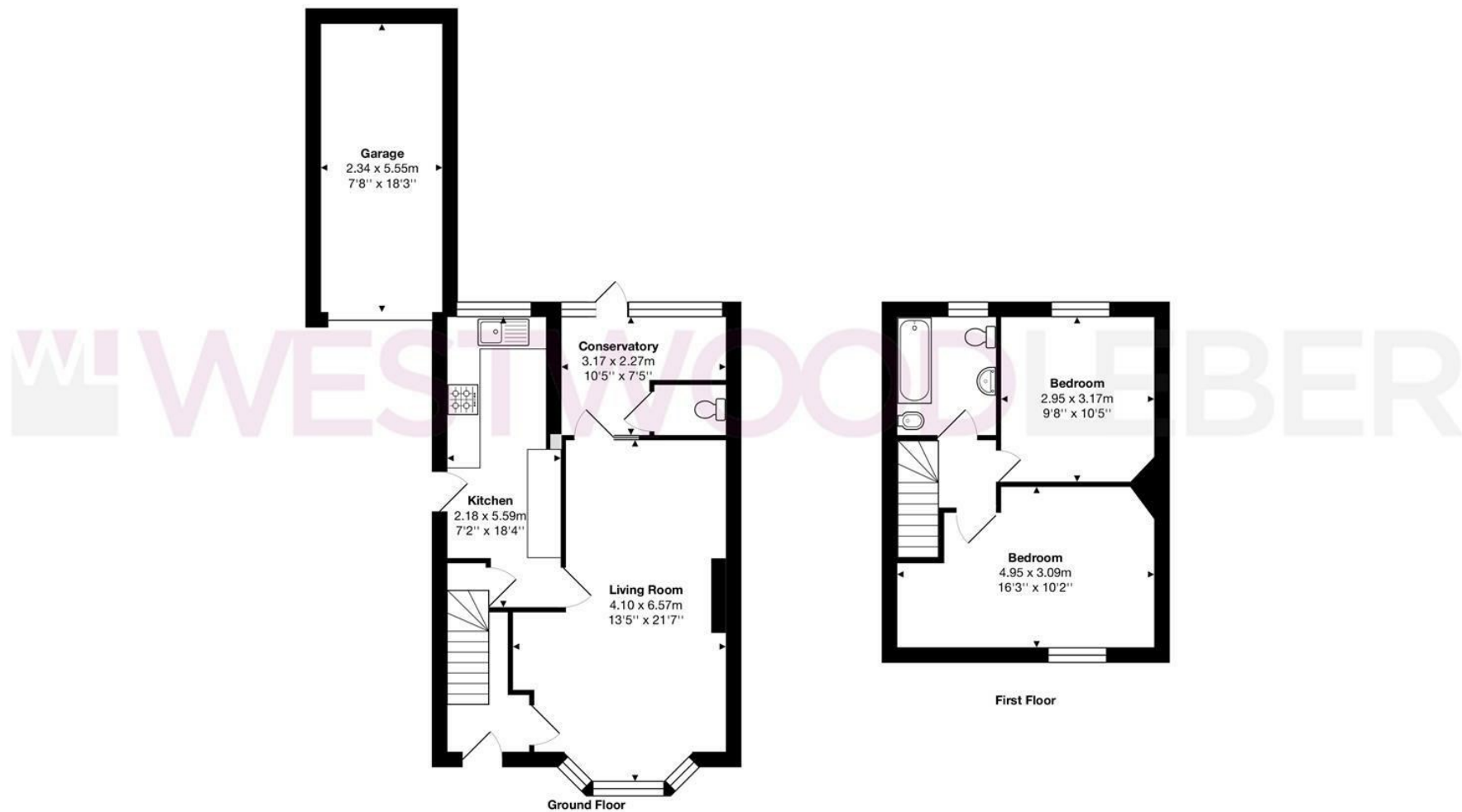
To the first floor, the home boasts two well-proportioned bedrooms, including a particularly spacious principal bedroom, alongside a family bathroom finished in a clean and practical style.

Externally, the property benefits from a private rear garden providing excellent space for outdoor seating and entertaining. A notable feature is the gated access at the rear of the garden, offering additional convenience and accessibility. The property also includes a garage, providing secure parking or useful additional storage.

Lilac Road is superbly positioned within easy reach of Hoddesdon town centre, local schools, shops and amenities, and is just a short walk from Rye House Station, making it an excellent choice for commuters requiring direct rail links into London. This attractive home would suit first-time buyers, downsizers and investors alike, and early viewing is highly recommended.



W WESTWOODLEBER



Total Area: approx. 90.4 m² ... 973 ft²

THE FLOORPLAN IS FOR ILLUSTRATIVE PURPOSES ONLY AND IS NOT TO SCALE.
Measurements and features are approximate and may differ from the actual property. Verify all details independently; no liability is accepted for errors or omissions.

Property marketing provided by www.fotomarketing.co.uk









WESTWOODLEBER



WESTWOODLEBER



WESTWOODLEBER



WESTWOODLEBER









