



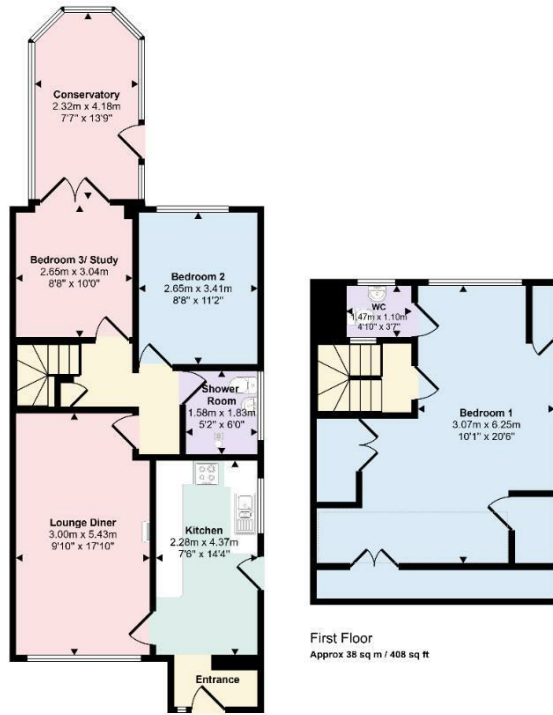
49 ROLFE CRESCENT NORTHAMPTON, NN7 3NG

£295,000
FREEHOLD

Stonhills are pleased to offer this well presented two/three bedroom dormer bungalow situated in a quiet cul-de-sac in the popular village of Nether Heyford. The accommodation includes a lounge/dining room, kitchen, conservatory, flexible bedroom/study space, first floor bedroom with WC, off road parking and a rear garden with countryside views. Offered with no chain.

 **stonhills**
LAND & ESTATE AGENTS

Approx Gross Internal Area
104 sq m / 1123 sq ft



Ground Floor
Approx 66 sq m / 715 sq ft

Denotes head height below 1.5m

This floorplan is only for illustrative purposes and is not to scale. Measurements of rooms, doors, windows, and any items are approximate and no responsibility is taken for any error, omission or mis-statement. Icons of items such as bathroom suites are representations only and may not look like the real items. Made with Made Snappy 360.



Energy Efficiency Rating		Current	Potential
Very energy efficient - lower running costs			
(92 plus) A			
(81-91) B			
(69-80) C			
(55-68) D		68	
(39-54) E			
(21-38) F			
(1-20) G			
Not energy efficient - higher running costs			
England & Wales	EU Directive	2002/91/EC	

Agents Note: Whilst every care has been taken to prepare these particulars, they are for guidance purposes only. All measurements are approximate and are for general guidance purposes only and whilst every care has been taken to ensure their accuracy, they should not be relied upon and potential buyers/tenants are advised to recheck the measurements

Northampton Office Sales
39 St Giles Street
Northampton
Northamptonshire
NN1 1JF

01604 624424
lewis@stonhills.co.uk
<https://www.stonhills.co.uk/>

