

Church View Tilegate Road

Ongar, Ongar

Welcome to Church View. A superb four bedroom family home with fantastic opportunity to extend (STP). Loved and cherished with stunning countryside views, this is a home with heart awaiting new memories.

Council Tax band: E

Tenure: Freehold

- Opportunity to extend (STP)
- Driveway & Garage
- Ground floor shower room
- Utility room
- Spacious private garden
- Countryside views
- Short drive to the M11



Hammond
& Smith

Entrance porch

Living Room

17' 2" x 17' 9" (5.22m x 5.42m)

Kitchen / Diner

20' 6" x 11' 0" (6.26m x 3.35m)

Utility Room

10' 1" x 8' 4" (3.08m x 2.55m)

Shower Room

Office

10' 9" x 11' 3" (3.27m x 3.44m)

Conservatory

9' 10" x 13' 3" (3.00m x 4.04m)

Bedroom

9' 0" x 13' 2" (2.75m x 4.02m)

Bedroom

11' 5" x 9' 6" (3.49m x 2.90m)

Bedroom

10' 2" x 8' 4" (3.09m x 2.53m)

Bedroom

10' 4" x 8' 4" (3.15m x 2.53m)

Bathroom

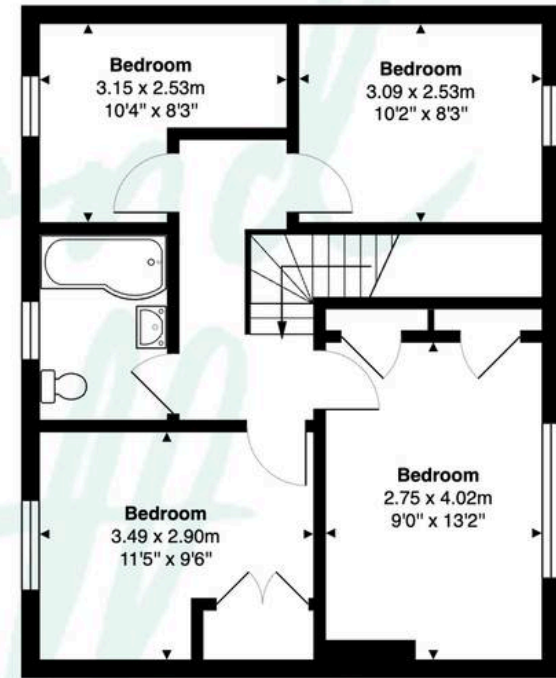




Church View Tilegate Road Ongar, CM5 0ED



Ground Floor



First Floor

Total Area: Approx. 148.1 sq m (1,594.3 sq ft)

This floor plan is for illustrative purposes only and is not to scale. Measurements are approximate and intended as a guide. All details should be verified independently.