



Kepler Road, SW4

£3,550 Per calendar month

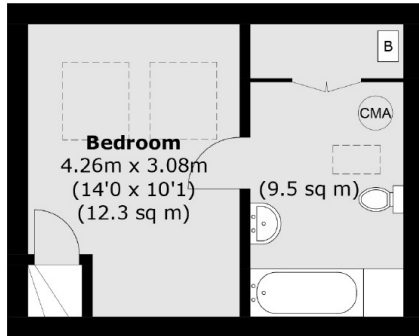
This top floor flat has three double bedrooms, a large reception space and an open plan kitchen, which is perfect for those looking to entertain friends in the evening.

Best of both worlds, Kepler Road is situated in between both Clapham High Street and Brixton with good access to both Victoria and Northern tube lines.

Features

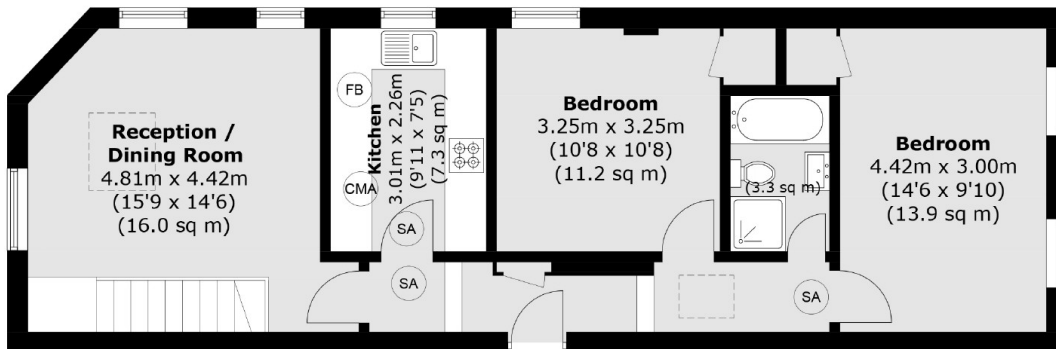
- Three Double Bedrooms
- Large Reception Room
- Modern Kitchen
- Two Bathrooms
- Prime Location
- Wooden Flooring

Kepler Road, London, SW4



- B Boiler
- CMA Carbon monoxide Alarm
- SA Smoke Alarm

Third Floor



Second Floor

Total area (approx.): 88.2 sq. m (949.3 sq. ft)