



Hawkshill Way, KT10

£3,495 Per calendar month

A family home with plenty to offer set in a fantastic location. Accommodation includes a spacious kitchen/diner, four double bedrooms, three bathrooms and off-street parking.

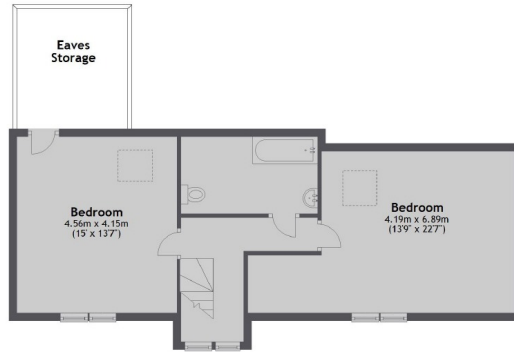
Hawkshill Way is nestled in stunning surroundings, and has local parks and cosy pubs nearby. Esher high street is just over half a mile away.

Features

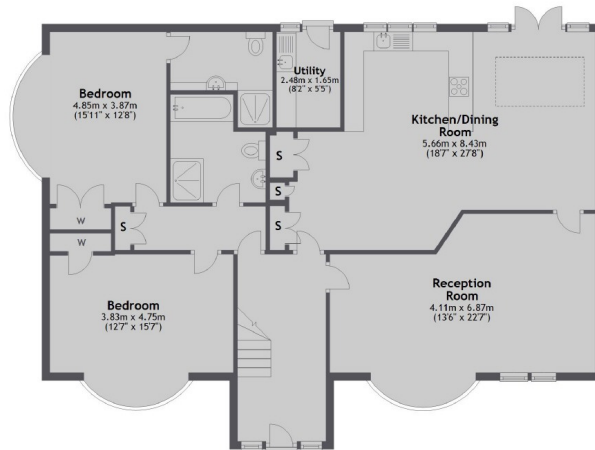
- Large Kitchen/Diner
- Four Double Bedrooms
- Three Bathrooms
- Double Garage
- Driveway
- Desirable Location

Hawkshill Way, Esher, KT10

First Floor



Ground Floor



Total area: approx. 188.3 sq. metres (2026.6 sq. feet)