



JON-PAUL BRAMPTON POWERED BY **exp** TM UK

@jon-paul.brampton@exp.uk.com

🌐 jonpaulbrampton.exp.uk.com

☎ 07359 015 020

Teachers Close, Pitstone, Buckinghamshire

Guide Price £395,000

🛏️ 2 🚿 1 🚗 1

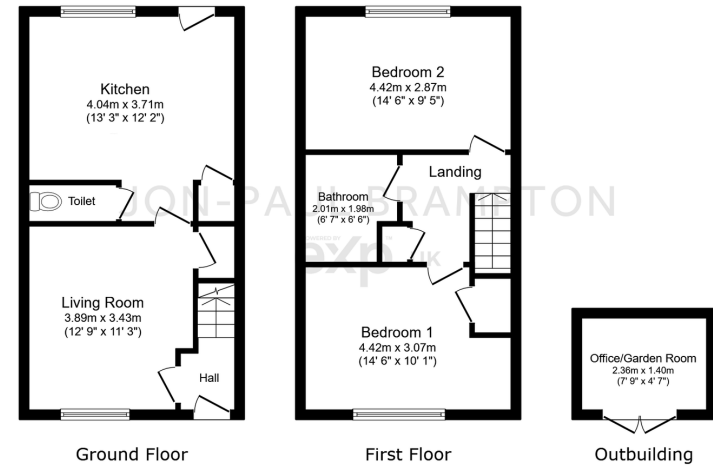


- Built in 2016
- Kitchen-diner
- Off street parking
- Close to school and shops
- Watch the video tour
- Two bedroom terrace home
- Home office
- Quiet cul-de-sac location
- Village setting
- Please quote JB0294 when calling from Rightmove.





JP presents...modern two bedroom terrace home with garden office in picturesque Pitstone



Total floor area: 80.0 sq.m. (862 sq.ft.)

This floor plan is for illustrative purposes only. It is not drawn to scale. Any measurements, floor areas (including any total floor area), openings and orientations are approximate. No details are guaranteed, they cannot be relied upon for any purpose and do not form any part of any agreement. No liability is taken for any error, omission or misstatement. A party must rely upon its own inspection(s). Powered by www.Propertybox.io

JON-PAUL BRAMPTON
exp UK

Energy performance certificate (EPC)		
6 Freeholders Close Pitstone LEIGHTON BUZZARD LU7 5PQ	Energy rating B	Valid until: 17 September 2027 Certificate number: 0051-3646-7214-6093-5201
Property type Mid-terrace house	Total floor area 74 square metres	
Rules on letting this property Properties can be let if they have an energy rating from A to E. You can read guidance for landlords on the regulations and exemptions https://www.gov.uk/guidance/domestic-energy-rated-property-minimum-energy-efficiency-standards-landlords-guidance		