



## Flat 8

Tavistock Road, 40 | | London | W11 1AW

£2,100 Per Month

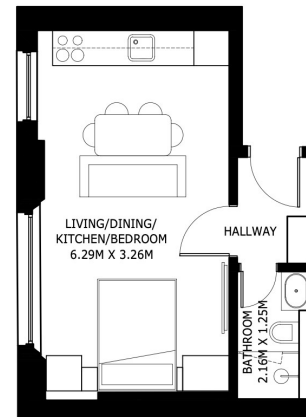
# SÉJOUR

# Flat 8

Tavistock Road, 40 |  
London | W11 1AW  
£2,100 Per Month

A stylish second-floor studio apartment situated within a charming period building in the heart of Notting Hill (W11). Recently refurbished to a high standard, this home offers a perfect blend of contemporary finishes and classic architectural character.

- Rare opportunity – first resident after full refurbishment
- Excellent natural light
- Separate modern kitchen with integrated appliances
- First floor studio apartment in prime Notting Hill (W11)
- Bespoke storage and fitted shelving
- Private contemporary bathroom



## UNIT 8

SECOND FLOOR  
GROSS INTERNAL AREA = 22.55 SQ.M.  
\*SIZES AND DIMENSIONS ARE APPROXIMATE, ACTUAL MAY VARY.

Energy Efficiency Rating		Current	Potential
Very energy efficient - lower running costs			
(92 plus) A			
(81-91) B		83	86
(69-80) C			
(55-68) D			
(39-54) E			
(21-38) F			
(1-20) G			
Not energy efficient - higher running costs			
England & Wales		EU Directive 2002/91/EC	

Council Tax  
Band New Build  
EPC Rating B

10 Cromwell Pl  
South Kensington  
London  
SW7 2JN  
020 3865 0611  
lettings@cityrelay.com