



Guide Price
£210,000

Leasehold

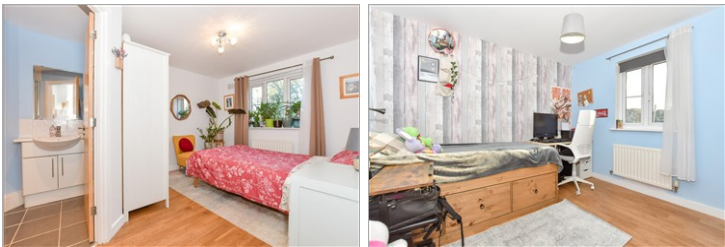
2x  2x  1x 

**Ingram Close, Larkfield,
Kent, ME20**

OVER 60?

Secure this property
for up to **59% less!**

Wards
Helping you move forwards



Main features

- Well presented throughout
- Enjoy the luxury of an en-suite shower room & a bathroom
- Spacious & sociable kitchen/living area - ideal for entertaining
- Only a short walk to Tesco supermarket
- Lovely walks close by at Leybourne Lakes Country Park

Accommodation

GROUND FLOOR

Entrance Hall

Kitchen/Living Area: 19'1 x 14'5 (5.82m x 4.40m)

Bedroom 1: 10'9 x 10'3 (3.28m x 3.13m)

En-Suite Shower Room

Bedroom 2: 10'6 x 10'2 (3.20m x 3.10m)

Bathroom

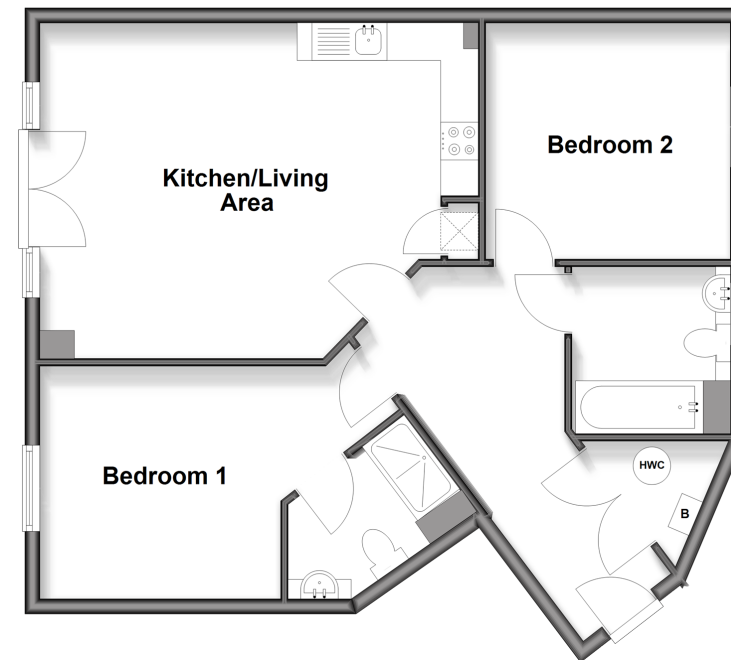
OUTSIDE

Allocated Parking Space

Communal Garden

Ground Floor

Approx. 67.8 sq. metres (729.8 sq. feet)



Call Larkfield - 01732 847877 ■ wardsofkent.co.uk

- Legal advice should be taken to verify fixtures/fittings, planning, alterations and/or lease details
- Appliances & services are untested, dimensions are approximate and floor plans are not to scale
- Through a Homewise Home For Life Plan people aged 60+ can secure this property for up to 59% less, by purchasing a Lifetime Lease



12933454/20260115/CK/JT