

**Need a Mortgage in principle to make offers?** Call us now for quick assistance!  
**0121 775 0101**



**Do you need to sell? Start your journey now!** Call us we can help.  
**01564 777 314**



**SCAN FOR MORE INFO**  
**SIZE** - 2431Sq Ft  
**TENURE** - Freehold  
**COUNCIL TAX** - Stratford Upon Avon Council - D  
**BROADBAND SUPERFAST** - Upload Max 20Mbps  
Download Max 80Mbps  
**MOBILE** - O2  
**EPC** - C - 71  
**PARKING** - Double Garage & Driveway  
**FLOODRISK** - Very Low  
**SERVICES** - Mains  
**COVENANTS** - N/A

## 87 Earlswood Common

**Earlswood, B94 5SJ**  
**Asking Price £750,000**

This well-presented traditional semi-detached home enjoys a sought-after position in the heart of Earlswood, combining countryside surroundings with everyday convenience. Known for its peaceful setting and scenic views, the area offers a relaxed way of life while remaining close to local amenities and transport links. The result is a home that suits family living perfectly, offering space, comfort and a setting that feels removed from the pace of town life yet remains well connected.

### FEATURES

- Beautifully Presented Semi-Detached Property
- Lounge Overlooking Front Elevation
- Stunning Kitchen/Family/Dining Room
- Principal Double Bedroom with Wardrobes & En-Suite Shower Room
- Three Further Good Sized Bedrooms
- Four Piece Family Bathroom
- Flexible Second Floor Bedroom with Landing Study Area
- Beautiful Large Rear Garden with Open Views
- Double Garage & Ample Driveway Parking
- Semi-Rural Location

**Are you an investor interested in expanding your portfolio?**

**Call 01564 777 314 to provide your investment criteria for alerts.**



**SCAN TO VIEW OUR WEEKLY FILMS & SUBSCRIBE**

### Sneak Peeks

Every week, we unveil "Sneak Peeks," a feature showcasing exclusive properties before they hit Rightmove and other platforms.

### The Landlord Club

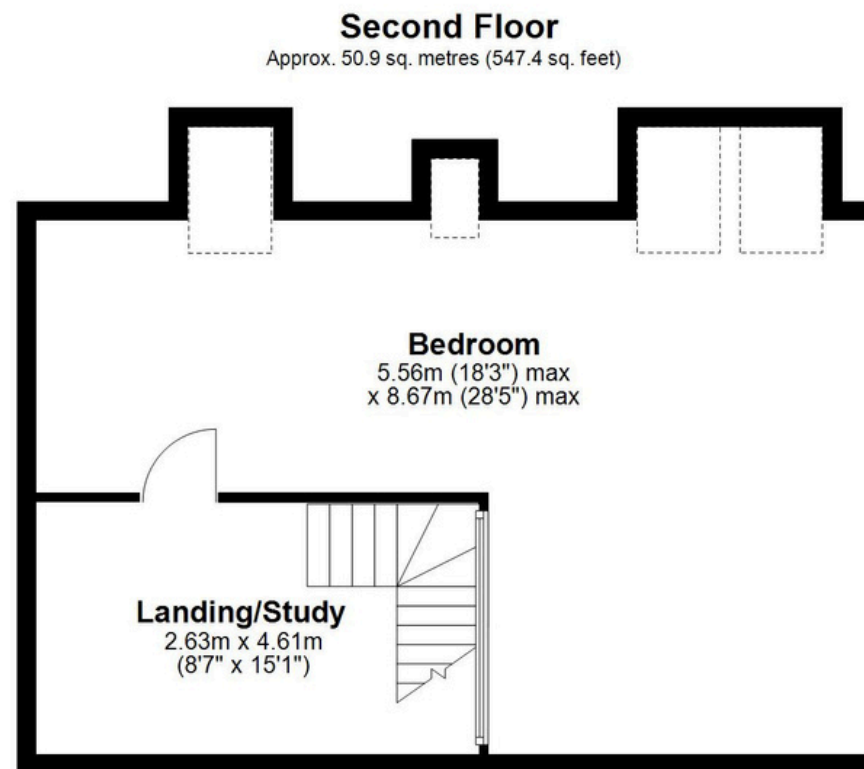
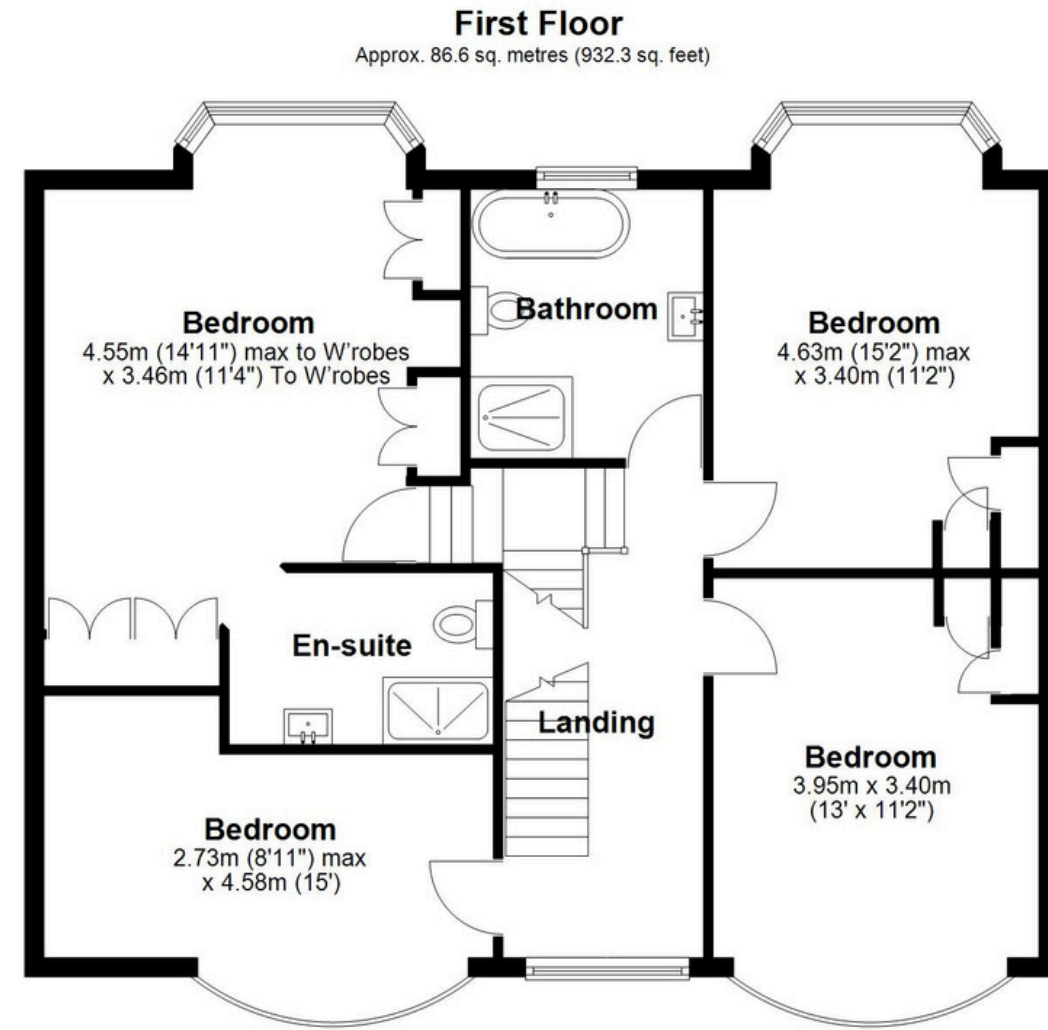
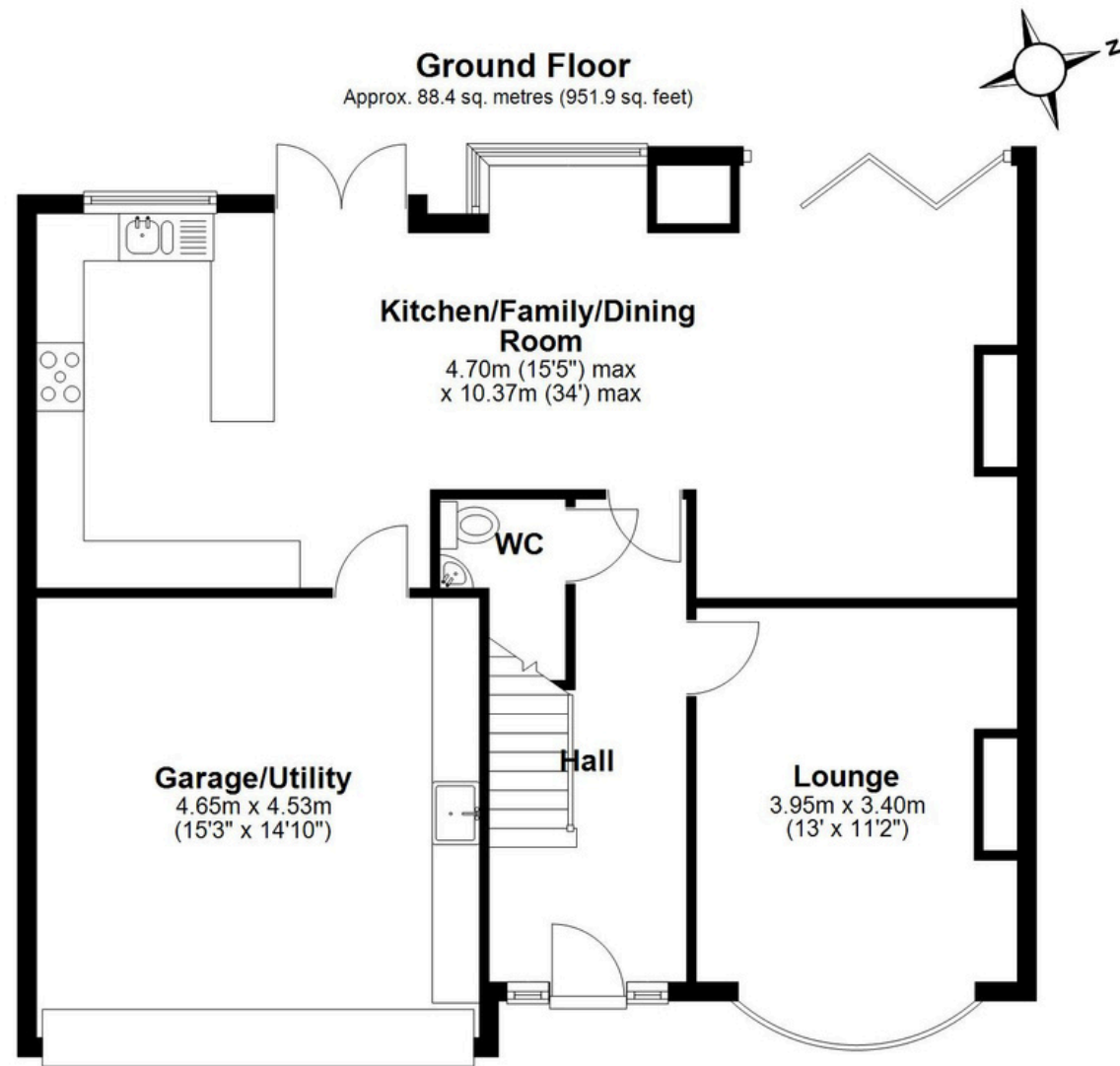
Join our Landlord Club for weekly updates on legislation, market trends, and our Letting Director's 'Investment Pick of the Week' for optimal ROI.

### HTSPMD

Tune into 'How's The Solihull Property Market Dom' weekly for a quick, insightful snapshot of the market.

### The Mortgage Update

Get weekly insights and the best deals with our Mortgage Update, your shortcut to navigating the complex mortgage landscape confidently.



Total area: approx. 225.9 sq. metres (2431.6 sq. feet)

This floor plan is for illustration purposes only, this is not intended to be a measured/scaled survey or comply with RICS guidelines. All measurements (including total floor area) openings, orientation and floor area are approximate. No details are guaranteed, they cannot be relied upon for any purpose and do not form part of any agreement. A party must rely upon its own inspection(s). No responsibility is taken for any error, omission, or mis-statement.

Plan produced using PlanUp.