


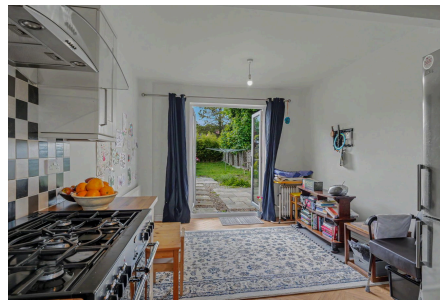
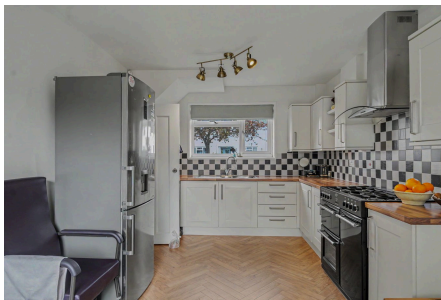


Shirley Park Road, Shirley, Solihull, B90 2BY

Offers Over £325,000

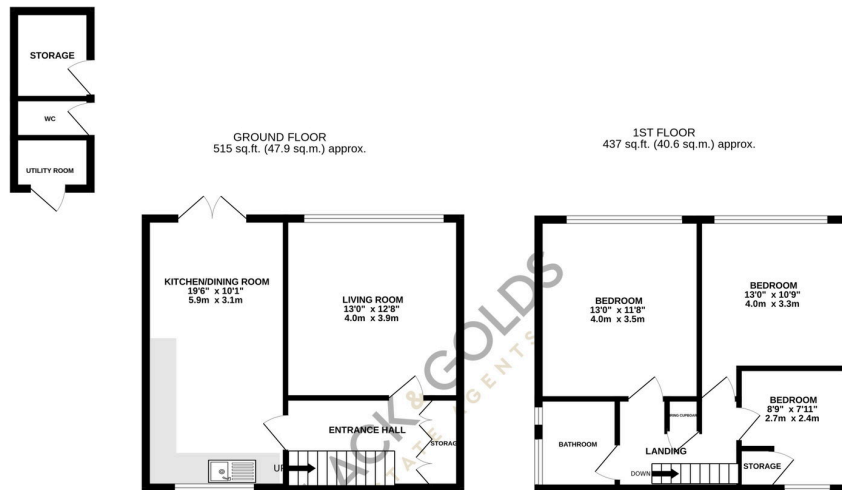
 3  1  1



Discover the charm of this delightful three-bedroom family residence, offering a perfect blend of comfort and functionality.

Key Features

-
-
-
-
-
-



TOTAL FLOOR AREA: 952 sq ft. (88.4 sq.m.) approx.

Whilst every attempt has been made to ensure the accuracy of the floorplans contained here, measurements of doors, windows, floors and any other items are approximate and no responsibility is taken for any error, omission or mis-statement. This plan is for illustrative purposes only and should be used as such by any prospective purchaser. The services, systems and appliances shown have not been tested and no guarantee as to their operability or efficiency can be given.
Made with Metropix ©2024