



Connells

Aldeford Drive
BRIERLEY HILL



Property Description

AN IMPRESSIVE & MUCH IMPROVED SEMI DETACHED PROPERTY OCCUPYING A GOOD SIZE PLOT WITH AMPLE DRIVEWAY & ATTRACTIVE REAR GARDEN. READY TO MOVE INTO. SITUATED ON THE EVER POPULAR WITHYMOOR VILLAGE WITH SCHOOLS, SAINSBURY'S & ATTRACTIVE GREEN SPACES ON YOUR DOORSTEP. ALDEFORD DRIVE IS A CUL-DE-SAC. THIS PROPERTY MUST BE VIEWED INTERNALLY TO FULLY APPRECIATE IMPROVEMENTS MADE AND WHAT'S ON OFFER.

To The Front

Tarmac driveway with lawn to side.

Entrance Porch

Double glazed front door, storage cupboard and door to;

Lounge

Double glazed bay window to the front elevation, radiator, stairs off to first floor landing, fireplace and door to;

Kitchen

Two double glazed windows to the rear elevation, a range of wall and base units, worksurfaces, inset sink/drain, spotlights to ceiling and combination boiler. Integrated electric hob and oven with extractor hood above. Provision for further domestic appliances. Dining area with double glazed french door to rear garden.

Gym/Utility Room

Accessed via lounge. Double glazed window to the front elevation and double glazed door to rear elevation, radiator and wood effect flooring. Door to cloaks/wc, utility area for washing machine and tumble dryer.

Cloakroom/Wc

Double glazed window to rear elevation, wash hand basin and low flush wc.

Landing

Double glazed window to the side elevation and doors to;

Bedroom Two

Double glazed window to the rear elevation and radiator.

Bedroom Three

Double glazed window to the front elevation and radiator.

Bathroom

Double glazed window to the rear elevation, bath with shower above, wash hand basin and wc.

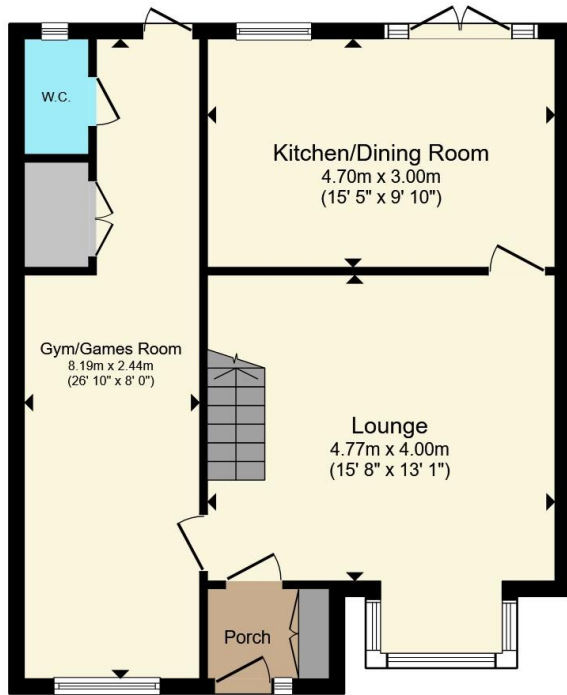
Bedroom One

Double glazed window to the front elevation, built in wardrobes and radiator.

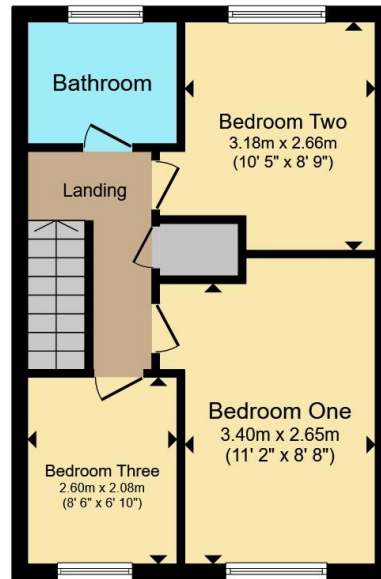
Rear Garden

Paved patio area, shrub borders and pathway to; Gate leading to summerhouse and garden shed.





Ground Floor



First Floor

Total floor area 99.4 m² (1,070 sq.ft.) approx

This floor plan is for illustrative purposes only. It is not drawn to scale. Any measurements, floor areas (including any total floor area), openings and orientation are approximate. No details are guaranteed, they cannot be relied upon for any purpose and they do not form part of any agreement. No liability is taken for any error, omission or misstatement. A party must rely upon its own inspection(s). Powered by www.propertybox.io



To view this property please contact Connells on

T 01384 374 545
E stourbridge@connells.co.uk

11B St. Johns Road
 STOURBRIDGE DY8 1EJ

EPC Rating: C Council Tax
 Band: B

view this property online connells.co.uk/Property/SBR313426

Tenure: Freehold



1. MONEY LAUNDERING REGULATIONS Intending purchasers will be asked to produce identification documentation at a later stage and we would ask for your co-operation in order that there will be no delay in agreeing the sale. 2. These particulars do not constitute part or all of an offer or contract. 3. The measurements indicated are supplied for guidance only and as such must be considered incorrect. Potential buyers are advised to recheck measurements before committing to any expense. 4. We have not tested any apparatus, equipment, fixtures, fittings or services and it is in the buyers interest to check the working condition of any appliances.

Connells Residential is registered in England and Wales under company number 1489613, Registered Office is Cumbria House, 16-20 Hockliffe Street, Leighton Buzzard, Bedfordshire, LU7 1GN. VAT Registration Number is 500 2481 05.

See all our properties at www.connells.co.uk | www.rightmove.co.uk | www.zoopla.co.uk

Property Ref: SBR313426 - 0007