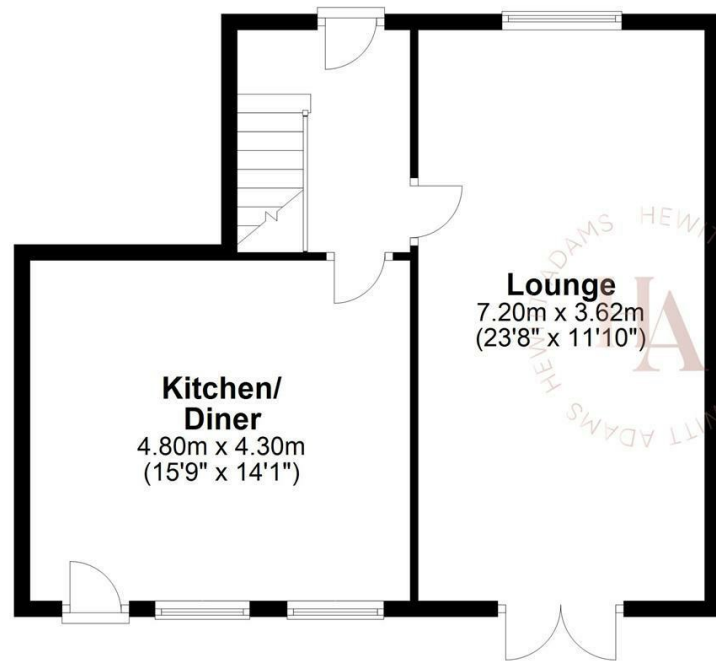




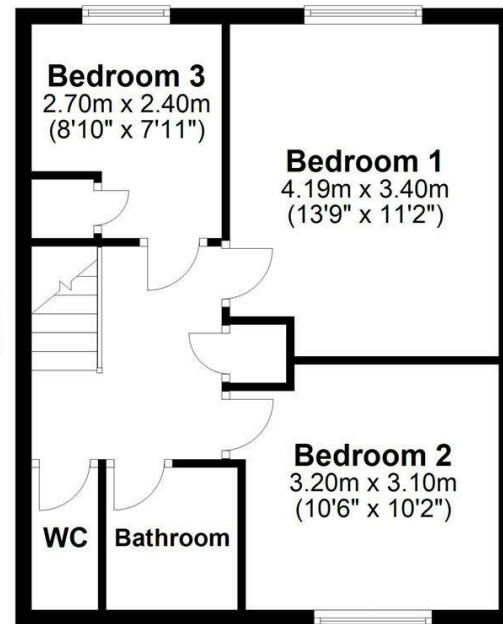
Ground Floor

Approx. 53.8 sq. metres (578.7 sq. feet)



First Floor

Approx. 43.6 sq. metres (469.5 sq. feet)



Total area: approx. 97.4 sq. metres (1048.2 sq. feet)
For illustration purposes only - not to scale

Kylemore Drive, Pensby, Wirral CH61 6XZ
Offers Over £275,000

3 Bedroom 1 Reception 1 Bathroom D

Detached Family Home - Three Bedrooms - No Chain!

Hewitt Adams is delighted to offer to the market with NO ONWARD CHAIN this three bedroom DETACHED home on the POPULAR Kylemore Drive.

In brief the accommodation affords; entrance hall, lounge dining room, extended kitchen. Upstairs there are three bedrooms and a bathroom and w.c.

With off-road driveway parking, and a good sized rear garden that is laid to patio and lawn.

The property is well placed for Pensby High School and is a walkable distance from the centre of Heswall.

Call Hewitt Adams on 0151 342 8200 to view.

Front Entrance

Into;

Hall

Staircase, radiator

Lounge

23'7" x 11'10" (7.20 x 3.62)

Double glazed window, radiator, power points, patio doors

Kitchen Diner

15'8" x 14'2" (4.8 x 4.3)

Wall and base units, inset sink, integrated oven and hob, spaces for white goods, double glazed window, double glazed rear door

UPSTAIRS

Bedroom One

13'8" x 11'1" (4.19 x 3.40)

Double glazed window, radiator, power points

Bedroom Two

10'5" x 10'2" (3.20 x 3.10)

Double glazed window, radiator, power points

Bedroom Three

8'10" x 7'10" (2.7 x 2.40)

Double glazed window, radiator, power points

Bathroom

Comprising bath, wash hand basin, double glazed window

W.C

W.C

EXTERNALLY

Front Aspect - Off-Road Driveway parking

Rear Aspect - Laid to patio and lawn

Council Tax Band

D

