



ESTATE AGENTS

www.cwestateagents.co.uk



11 Muskett Drive, Northwich CW8 4YP

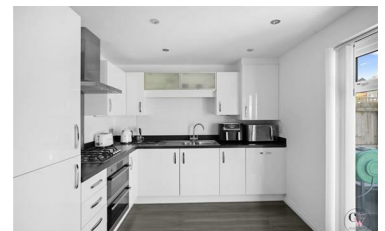
Offers in excess of £250,000



Situated on the ever-popular Muskett Drive within the sought-after Winnington Urban Village, this superb home enjoys a prime position in a modern, family-friendly community on the edge of Northwich. The area is well regarded for its blend of contemporary living and open green spaces, with pleasant walks, play areas and everyday amenities all close at hand. Local shops, supermarkets and leisure facilities are easily accessible, while a choice of well-regarded primary and secondary schools makes this an ideal setting for families. Commuters are particularly well catered for, with excellent road links to the A556 and A559, and Northwich railway station offering regular services to Manchester, Chester and beyond.

The property itself is a beautifully presented home that is ready to move straight into. Externally, there is a driveway providing off-road parking to the front, while to the rear is a fully enclosed and private garden, complete with a garden shed – perfect for relaxing, entertaining or family life.

- Sought-after Winnington Urban Village, • Popular location of Muskett Drive
- Beautifully presented throughout • Three great sized bedrooms
- Modern en-suite, bathroom and downstairs cloakroom • Driveway providing off road parking.



01606 514 152
 info@cwestateagents.co.uk
 @CWestateAgent
 @CWestateAgents